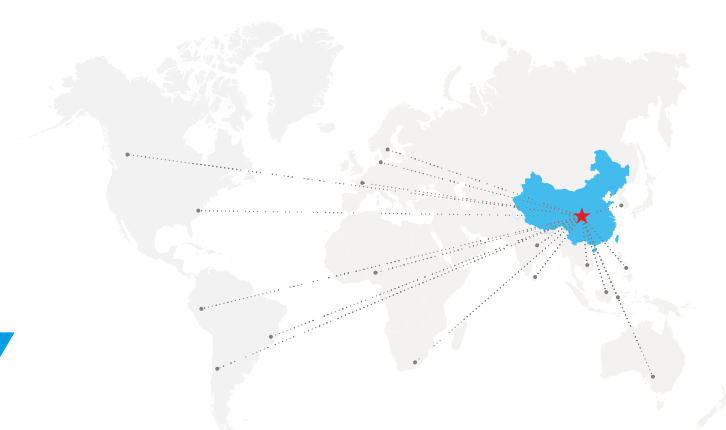


PRODUCTS CATALOG

CHONG QING BLUE JAY
TECHNOLOGY CO.,LTD





Contents

MEASUREMENT DEVICE

DIGITAL PANEL METER	4
BPM Series Standard Digital Panel Meter	5
APM Series Multi-Function Digital Panel Meter	7
DIN-RAIL ENERGY METER	9
DEM Series Din-Rail Energy Meter	10
MCM Series Multi-Channels Energy Meter	12
NEW MCM Series Multi-Channels Energy Meter	14
DC ENERGY METER	16
DCEM Series DC Energy Meter	16
POWER TRANSDUCER	18
QPPX 3-Phases Programmable Power Transducer	19
DP/QP Series Power Transducer	20
CURRENT TRANSFORMER	22
SCT Series Current Transformer	23
DPT Series Split Core Current Transformer	24
MES Series Solid Core Current Transformer	25
HCT Series Current Transformer	26
DC SHUNT	27
FL Series DC Shunt	28

AUTOMATIC PROTECTION RELAY

CABINET ENVIRONMENT MONITORING	29
DH Series Peltier Cooler Dehumidifier	29
WSK Series Cabinet Thermostat	31
FEEDER PROTECTION AND CONTROL	33
PR Series Digital Motor Protection Relay	33
RCM Series AC Residual Current Monitor	40
ELR Series Earth Leakage Relay	42
BUSBAR PROTECTION RELAY	44
AFR Series Arc Protection Relay	48
SCM-PD3000 Partial Discharge Monitor	49
SCM-W3000 Wireless Temperature Monitor	51
JY Series DC Insulation Monitor	53

DIGITAL PANEL METER

Introduction

Blue Jay digital panel meter is a digital alternative to analog display instrument, which has lower cost for installation and can make full use of panel space. It is suitable for indication and monitoring of single-phase or three-phase circuits, accepts various inputs (such as voltage, current, frequency, etc.), provides alarm relay, analog signal transmission and optional pulse output.

We supply high-quality, high-precision BPM series standard digital panel meters and APM series multi-function digital panel meters, which can be used to measure various electrical parameters, including voltage, current, frequency, etc. The large LCD screen helps you easily read the digital results displayed on it.



Reference Standards

Measurement standard

Active energy	IEC 62053-22:2003
Reactive energy	IEC 62053-23:2003
Basic electricity	IEC 61557-12:2007

LVD test standard

IEC/EN 61010-1	2017, CAT III-300V
----------------	--------------------

EMC test

Discharge immunity	IEC 61557-12:2007
Fast transient burst immunity	IEC 62053-22:2003
Surge (Shock) immunity	IEC 62053-23:2003

Application

- Remote data reading.
- Power quality analysis.
- Harmonic measurement.
- Commercial, industrial, utility.
- Medium and low voltage systems.
- Alarm station with voltage-free digital inputs.
- Metering of distribution feeders, transformers, generators, capacitor banks and motors.

Measurement Parameter

Voltage Current Power Reactive power Apparent power	Va, Vb, Vc / Vab, Vbc, Vca Ia, Ib, Ic Pa, Pb, Pc, Psum Qa, Qb, Qc, Qsum Sa, Sb, Sc, Ssum
Frequency Power factor Active energy Reactive energy Voltage THD *	Fra, Frb, Frc, Fr PFa, PFb, PFc, PF Ep_imp, Ep_exp, Ep_total Q_imp, Q_exp, Q_total THD_U%, THD_I%
Harmonic Multi- tariffs Max demand Power quality	2~15 th / 2~31 th / 2~63 th 3 Month, 4 Tariffs, 12 Segment Um, Im, Pm, Qm Voltage Drop / Flicker / Unbalance

BPM SERIES STANDARD DIGITAL PANEL METER

DIGITAL PANEL METER



Introduction

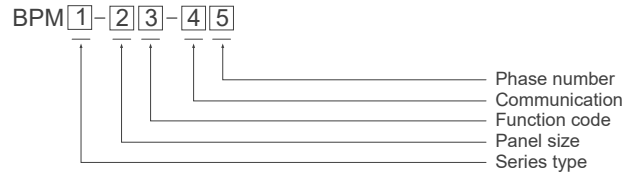
BPM series standard digital panel meter especially developed for indication and supervision of the three-phase circuit, replaces an analogical display meter, reducing installation procedure and optimizing utilization of panel space.

It's ideal for protection of single phase or three- phase networks, it is monitored and usually have superior and subordinate alarms. Protection of the parameters of programming by password.

Main Features

- Measurement functions include: current, voltage, three-phase total power, power factor, frequency.
- 0.5% high-precision measurement.
- Large HD LED screen display.
- Password protected programming parameters.
- Protection for single-phase and three-phase networks.
- ITF technology: input and output current insulation protection.
- RS-485 communication, optional expandable I/O modules.
- Various installation sizes, excellent panel space utilization.
- Wide range power supply (85-265VAC/DC)

Ordering Information



Num.	Code	Description
1	2	Basic type
	3	Economic type
2	96	96(W)x96(H)x71(D)mm
	72	72(W)x72(H)x71(D)mm
	80	80(W)x80(H)x71(D)mm
3	U	Voltage meter
	I	Current meter
	P	Active power meter
	Q	Reactive power meter
	H	Power factor meter
	F	Frequency meter
	UI	Voltage & current combine meter
	UIF	Voltage & current& frequency combine meter
	PQH	Power & power factor combine meter
	E	Economic multifunction meter
4	Blank	Without this function
	R	With RS485 interface, Modbus-RTU
5	1	Single-phase
	3	Three-phases

Note: BPM2 series only can select from num.2-4.

Measurement Function

Model	BPM2/3 -96U	BPM2/3 -96I	BPM2/3 -96P	BPM2/3 -96Q	BPM2/3 -96H	BPM2/3 -96F	BPM3 -96UI	BPM3 -96UIF	BPM3 -96PQH	BPM3 -96E
Parameter										
Voltage	●	-	-	-	-	-	●	●	-	●
Current	-	●	-	-	-	-	●	●	-	●
Active power	-	-	●	-	-	-	-	-	●	●
Reactive power	-	-	-	●	-	-	-	-	●	●
Power factor	-	-	-	-	●	-	-	-	-	●
Frequency	-	-	-	-	-	●	-	●	●	●
Active energy	-	-	-	-	-	-	-	-	-	●
Reactive energy	-	-	-	-	-	-	-	-	-	●
Expansion module										
Analog output	-	-	-	-	-	○	○	○	○	○
Digital output	-	-	-	-	-	○	○	○	○	○
Energy pulse output	-	-	-	-	-	○	○	○	○	●

● With this function ○ Optional function - Without this function

Technical Characteristics

Model	BPM2		BPM3
Current measurement (TRMS)			
CT secondary	1 or 5 A True RMS		
Measurement range	0 ... 11 kA		
Input consumption	<0.4 VA		
Voltage measurement (TRMS)			
Measurement range	18 ... 400 VAC True RMS		
PT secondary	100VAC or 400VAC		
Frequency	50 / 60 Hz		
Input consumption	<0.1 VA		
Frequency measurement			
Measurement range	45 ... 65 Hz		
Accuracy	±0.02Hz		
Measurement accuracy			
Voltage, current	0.50% (IEC 61557-12)		
Active power, reactive power	0.50% (IEC 62053-12)		
Active energy	Class 1.0 (IEC 62053-22)		
Reactive energy	Class 2.0 (IEC 62053-23)		
Power supply			
AC voltage	220VAC	85-265V AC/DC ± 10 %,Optional 20-60VDC	
Consumption	≤4VA		
I/O Module			
Pulse outputs (PO)	NONE	Equipped on meter with energy meter function	
Quantities	/	Optional 1 - 2 channel	
Pulse constant	/	5000imp/kWh 20000imp/kVarh	
Optocoupler isolation capability	/	2kVac r.m.s	
Relay outputs (DO)	/	Optional 1 - 4 channel	
Load capacity	/	5A@250Vac or 5A@30Vdc	
Digital inputs (DI)	/	Optional 1 - 6 channel	
Quantities of port	/	96mm size meter max 6*DI 80mm and 72mm size meter max 4* DI	
Load capacity	/	Ri<500Ω turn on, Ri>100kΩ turn off	
Analog output (AO)	/	Optional 1 - 3 channel, current 4~20mA,	
Load capacity		load <390Ω, or 0~10V, load >100KΩ	
Quantities of port	/	96mm size meter max 3*AO 80mm and 72mm size meter max 1* AO	
Communication			
Protocol	/	Modbus RTU	
MODBUS speed	/	4800 / 9600 / 19200 bauds	
Others			
Calibration environment	27°C ± 5°C		
Operation environment	0 to 50°C,RH < 70%		
Storage environment	-10 to 60°C,RH < 70%		
Weight	Appx.300-400g	Appx.300g	
Dielectric strength (AUX terminal)	2 kV at 50Hz for 1 min		

APM SERIES MULTI-FUNCTION DIGITAL PANEL METER

DIGITAL PANEL METER



Introduction

APM series advanced multifunction digital panel meter. It is the perfect choice for monitoring and controlling power distribution systems, with 4 direct access keys and high-definition LCD display to showing all parameters of 3P3W or 3P4W low voltage installation.

The panel meter can be used as a data acquisition device for an intelligent power distribution system or a factory automation system, and can remote obtain all monitoring data through digital RS485.

Main Features

- PMD measurement accuracy class 0.2.
- Current measurement.../5 or.../1 A.
- Wide range power supply (85-265VAC/DC), 20-60VDC optional.
- 1.6-inch dot matrix LCD display.
- LCD liquid crystal display, with backlight.
- Optional load alarms and time stamps.
- SOE record, virtual alarm function.
- ITF technology: input and output current insulation protection.
- Optional 128MB data logger memory.
- Optional expansion I/O module, ethernet connection port.
- With RS-485 Modbus RTU communication.
- Various advanced electrical parameters can display grid status on site (maximum demand/unbalance degree/crest factor/K factor...).
- 1KHz waveform snapshot, captures voltage, current power flickers/drops with a length of 1 second for event tracking.

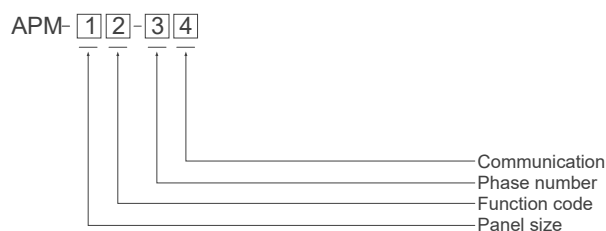
Measurement Function

Model	APM-96Z	APM-96Y	APM-96J	APM-4MJ	APM-96Q
Parameters					
Basic parameters ⁽¹⁾	●	●	●	●	●
Split -phase measure	-	-	-	●	●
Harmonic distortion	-	●	●	●	●
Individual harmonic	-	2~15th	2~31st	2~31st	2~63rd
Time of use (TOU)	○	●	●	●	●
Max demand	-	-	●	●	●
SOE record	-	-	●	●	●
Waveform capture	-	-	-	-	●
Curr./volt imbalance	-	-	●	●	●
Curr./volt deviation	-	-	●	●	●
Volt flicker/drop/fluct.	-	-	-	-	●
128MB memory	-	-	-	-	○
I/O module					
AO (0/4~20mA;0~5V)	○	○	○	-	○
DI/DO	○	○	○	○	○
PO (Pulse output)	○	○	○	○	○
Communication					
RS485	●	●	●	●	●
Ethernet 10/100MB	-	○	○	-	○
Profibus	○	○	○	○	○

●With this function ○Optional function -Without this function

(1) Basic parameters: Voltage, Current, Frequency, Total power factor, Active power, Reactive power, Apparent power, Active energy, Reactive energy.

Ordering Information



Num.	Code	Description
1	96	96(W)x96(H)x71(D)mm
	72	72(W)x72(H)x71(D)mm
	80	80(W)x80(H)x71(D)mm
	XM	Module width of Din-rail mounting
2	Z	Economic power meter
	Y	Multifunction power meter
	J	Smart power monitor
	Q	Intelligent power analyzer
3	1	Single-phase
	3	Three-phases
4	Blank	Default: With RS485 interface, Modbus-RTU
	Eth	Ethernet interface, Modbus-TCP & Modbus-RTU

Technical Characteristics

Model	APM-4MJ	APM-96Z	APM-96Y	APM-96J	APM-96Q
Current measurement (TRMS)					
CT secondary	1 or 5 A				
Measurement range	0...11 KA				
Input consumption	<0.4 VA				
Voltage measurement (TRMS)					
Measurement range	18...400 VAC				
PT secondary	100 VAC/400 VAC				
Frequency	50 / 60 Hz				
Input consumption	<0.1 VA				
Elctrical power measurement (IEC 61557-12)					
Accuracy (V,I)	0.2%	0.2%	0.2%	0.2%	0.2%
Accuracy (P,Q)	0.5s%	0.5s%	0.5s%	0.5s%	0.5s%
Frequency measurement					
Measurement range	45...65 Hz				
Accuracy	±0.02 Hz				
Energy accuracy (IEC 62053-23)					
Active energy	Class 0.5s				
Reactive energy	Class 1.0				
Power supply					
AC voltage	85~265VAC/DC ± 10 %				
Consumption	≤4VA				
I/O ports					
Pulse output (PO)	1* Pulse, 1600imp/kWh	2* Pulse, 1600imp/kWh			
Pulse constant	5000imp/kWh,20000imp/kVarh				
Relay output (DO)	5A@250Vac / 5A@30Vdc				
Digital Input (DI)	Dry contact, Ri<500Ω turn on, Ri>100kΩ turn off				
Analog output (AO)	/	4~20mA, load <390Ω,or 0~10V, load >100KΩ			
Communication					
Link method	RS485 (2/3 wires half duplex)				
Protocol	Modbus RTU				
MODBUS speed	4800/9600/19200bauds				
Others					
Calibration environment	27°C ± 5°C				
Operation environment	0 to 50°C, RH < 70%				
Storage environment	-10 to 60°C, RH < 70%				
Dielectric strength (Voltage sampling)	2 kV at 50Hz for 1 min				
Dielectric strength(AUX terminal)	4 kV at 50Hz for 1 min			2 kV at 50Hz for 1 min	

DIN-RAIL ENERGY METER

Introduction

The Din-rail energy meter, an energy meter for DIN rail mounting, used for residential energy metering and smart energy project, and measuring energy usage in industrial environments. High performance DIN rail energy meters can provide cost-effective power and energy metering solutions.

Majority of meters have LCD display and certification approved. Besides, as a leading din rail energy meter manufacturer in China, we support OEM and DOM service for these din rail energy meters.



Reference Standards

Measurement standard

Basic electricity	IEC 61557-12:2007
Active energy	IEC 62053-22:2003
Reactive energy	IEC 62053-23:2003

LVD test standard

IEC/EN 61010-1	2017, CATIII-300V
----------------	-------------------

EMC test

Discharge immunity	IEC 61557-12:2007
Fast transient burst immunity	IEC 62053-22:2003
Surge (Shock) immunity	IEC 62053-23:2003

Measurement Parameter

Basic parameter	Voltage(U), Current (I)@0.2% Power (P, Q, S)@0.5% Power factor (H)@ 0.1% Frequency (Hz)@0.1%
Active energy	Consumed (Ep+)@0.5% Generated (Ep-)@0.5%
Reactive energy	Consumed (Eq+)@2.0% Generated (Eq-)@2.0%

Application

- Replace mechanical meters.
- Tenant sharing, cost sharing.
- Commercial, industrial, utility.
- Middle and low voltage systems.
- Calculation and settlement of household electricity bills.
- Metering of distribution feeders, transformers, generators, capacitor banks and motors.

DEM SERIES DIN-RAIL ENERGY METER

DIN-RAIL ENERGY METER



Introduction

DEM series design for DIN-Rail mounting, suit for residential energy metering and smart energy project. DEM series has Modbus-RTU and pulse output communication allows seamless integration with data acquisition systems.

Various sub-models available, expansion modules are available in built-in and external versions. Combines high performance smart energy meter, ease of integration to provide a cost-effective power and energy metering solution. Featuring a LCD display designed to simplify setup and local reading of meter data.

Main Features

- 35mm DIN-rail installation.
- 0.5s high precision measurement.
- Large LCD screen with backlight.
- RS485 with Modbus-RTU.
- 80A current direct input, 0.04A start current.
- Built-in energy pulse output and alarm output.
- Compatible with both 50Hz and 60Hz systems.
- IEC 62053-21 1.0 Class / IEC 62053-22 0.5 class.
- Optional multiple tariffs and prepaid billing functions.
- 10-400VAC direct voltage input, optional VTs connect.
- Tamper-proof design approved for revenue applications.
- Wide range power supply (85-265VAC/DC).

Measurement Function

Model	DEM-2M1D	DEM-3M1C	DEM-4M1D	DEM-7M3D	DEM-4MC
Parameters					
Basic para. ⁽¹⁾	●	●	●	●	●
4-quad. energy	●	●	●	●	●
Built-in CT(80A)	●	-	●	●	-
External CT(5A)	-	●	-	-	●
Harmonic distortion	-	-	-	○	○
Individual harmonic	-	-	-	2-31st	2-31st
Time of use (TOU)	-	-	○	○	○
Max demands	-	-	○	○	○
SOE record	-	-	-	○	○
Curr./volt imbalance	-	-	-	○	○
Curr./volt deviation	-	-	-	○	○
I/O module					
AO (0/4~20mA;0~5V)	-	-	-	-	-
DI/DO	-	-	-	○	○
PO (Pulse output)	-	-	●	●	●
Communication					
RS485 modbus	●	●	●	●	●
Remote control	-	-	○	○	○
Wireless function	-	-	○	○	○

●With this function ○Optional function -Without this function

⁽¹⁾ Basic parameters: Voltage, Current, Frequency, Total power factor, Active power, Reactive power.

Ordering Information



Num.	Code	Description
1	2M	2 Modules width Din-rail
	3M	3 Modules width Din-rail
	4M	4 Modules width Din-rail
	7M	7 Modules width Din-rail
2	1	Single-phase
	3	Three-phases
3	D	Direct access
	C	Use external CT

Technical Characteristics

Model	DEM-2M1D	DEM-3M1C	DEM-4M1D	DEM-7M3D	DEM-4MC
Basic parameter					
Wiring method	Single-phase, 1P2W			Three-phases, 3P3W/ 3P4W	
Power supply	Self-powered	85-265 VAC/DC	Self-powered	Self-powered	85-265 VAC/DC
Display capacity	9,999,999 KWh	9,999,999 MWh	99,999,999 KWh	99,999,999 KWh	99,999,999 MWh
Voltage rating	18...250 VAC				
Current	0.04-10(80)A	5A or.../1A CTs	0.04-10(80)A	0.04-10(80)A	5A or.../1A CTs
Measurement accuracy					
Current	0.5%	0.2%	0.5%	0.5%	0.2%
Voltage	0.5%	0.2%	0.5%	0.5%	0.2%
Active energy	Class 1	Class 0.5	Class 1	Class 1	Class 0.5
Reactive energy	Class 2	Class 1	Class 2	Class 2	Class 1
Others					
Module number	2	3	4	7	4
Weight	130g	170g	230g	310g	250g
Temperature	-25°C to 55°C				
IP protection	IP40 front panel and IP20 casing				
Dielectric strength	2 kV at 50Hz for 1 min				

MCM SERIES MULTI-CHANNEL ENERGY METER

DIN-RAIL ENERGY METER



Introduction

MCM series multi-channels power meter is special designed metering device for feeder loops. Multi-function design to provide electrical parameter measurement for three-phases or single phase branch circuits, it performs a real-time metering, measures energy consumption and monitors power quality.

Advanced communications options including Modbus via RS485, optional Ethernet port; Multiple digital input ports can collect pulse signal from water meters and gas meters etc.

Main Features

- Measurement accuracy class 0.5.
- Current measuring.../5 or.../1 A.
- Multi-circuits metering.
- With harmonic analysis.
- Optional 6DI, 2DO ports.
- 1.6 inch dot matrix LCD display.
- Advanced electrical parameter measurement.
- Provide 5 virtual alarm triggers.
- With SPDT relay output for alarm output.
- With RS485 modbus RTU communications.
- Optional multi-tariffs ratio.
- Optional max 99 lists SOE record.
- Accept customization designs.

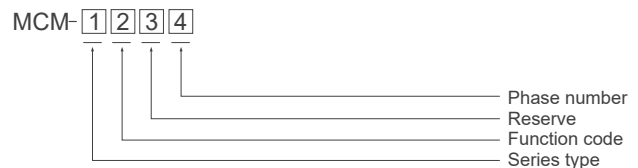
Measurement Function

Model	MCM2603	MCM2601	MCM2403	MCM2401	MCM1000
Parameters					
Basic parameters ⁽¹⁾	●	●	●	●	●
Harmonic distortion	-	-	●	●	-
Individual harmonic	-	-	2-15th	2-15th	-
Time of use (TOU)	-	-	-	-	-
Max demand	-	-	-	-	-
SOE record	-	-	-	-	-
Curr./volt imbalance	○	○	-	-	-
Curr./volt deviation	○	○	-	-	-
Measurement signal access					
4 Channels (3P)	-	-	●	-	-
6 Channels (3P)	●	-	-	-	●
12 Channels (1P2W)	-	-	-	●	-
18 Channels (1P2W)	-	●	-	-	○
I/O port module					
DI	○	○	-	-	-
DO	○	○	○	○	○
PO (Pulse output)	○	○	-	-	○
Communications					
RS485	●	●	●	●	●
Ethernet 10/100MB	-	-	○	○	-
Profibus	○	○	○	○	○

●With this function ○Optional function -Without this function

⁽¹⁾ Basic parameters: Voltage, Current, Frequency, Total power factor, Active power, Reactive power, Apparent power, Active energy, Reactive energy, Individual harmonic.

Ordering Information



Num.	Code	Description
1	1	First generation
	2	Second generation
2	4	4 Metering ICs built-in
	6	6 Metering ICs built-in
3	0	Reserved item
4	1	Single-phase
	3	Three-phases (Only for second generation)

Technical Characteristics

Model	MCM2600	MCM2400	MCM1000
Current measurement (TRMS)			
CT secondary rated	Standard 1A/5A	100mA,333mV optional	Standard 1A/5A
Measurement range	0 ... 9999A		
Overload	1.2 times rated continuous; 5 seconds for 10 times of the rated		
Input consumption	<0.2 VA		
Voltage measurement (TRMS)			
PT secondary	100VAC	100VAC / 400VAC	
Frequency	45 ... 65 Hz		
Overload	30 seconds for 2 times of the rated		
Input consumption	<0.2 VA		
Direct measurement	18 ... 300 VAC L-N		18 ... 400 VAC L-L(18...250VAC L-N)
Power supply			
AC voltage	DC/AC 85~265 ± 10 %, 50 / 60 Hz		
Consumption	< 10 VA		
I/O port (alarms / control)			
Number of relays	2 Channel DO & 6 channel DI	1 x SPDT relay	2 Channel DO & 6 Channel DI
Type	5 A@230VAC, passive node		
Communication			
Link method	RS485 (2/3 wires half duplex)		
Protocol	Modbus RTU		
MODBUS speed	4800/9600/12800/19200bps		

NEW MCM SERIES MULTI-CHANNEL ENERGY METER



Introduction

BLUEJAY New Generation MULTI-CHANNEL ENERGY METER is engineered for precise energy monitoring in both residential and industrial settings. It offers flexible channel configurations from 1 to 24, supporting both single-phase and three-phase measurements for diverse applications.

Designed with rigorous safety standards, the meter meets CATIII-300V requirements and can withstand voltages up to 4KV. It also provides versatile communication options, including RS485 and Ethernet, with optional modules such as DI, DO, PO, and AO for enhanced system integration.

Main Features

- 0.5s High accuracy energy measurement;
- Single-phase and three-phase measurements;
- Supports 1 to 24 channels multi-channel configuration;
- Residential and industrial energy monitoring applications;
- CATIII-300V voltage safety standards;
- Up to 4KV withstand capability;
- Communication: RS485, Modbus-RTU; Ethernet, TCP/IP optional;
- Expandable modules: DI, DO, PO, AI and AO optional;

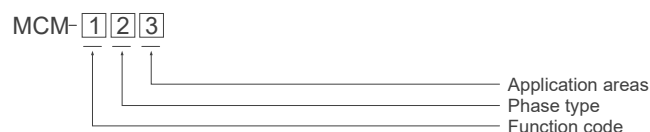
Measurement Function

Model	MCM211D	MCM243d	MCM263T	MCM283D	MCM283R
Metering features					
Basic parameters	●	●	●	●	●
Volt. harmonic distortion	●	●	●	●	●
Curr. harmonic distortion	●	●	●	●	●
Individual harmonic	●	●	●	●	●
Time of use (TOU)	●	●	●	●	●
Curr. / Volt. unbalance	●	●	●	●	●
SOE record	●	●	●	●	●
Measurement signal access					
1A & 5A	○	○	●	○	○
100mA	●	●	○	●	●
333mV	●	●	○	○	○
L-N 300V, 3P	●	●	●	●	●
L-L 480V,1P	-	●	●	●	●
Communications and I/O port					
RS-485/ Modbus RTU	●	●	●	●	●
Ethernet 10/100MB	○	○	-	○	○
Digital input/ output	○	○	○	○	○
Analog input/ output	○	○	○	○	○
Pulse output	○	○	-	○	○

●With this function ○Optional function -Without this function

(1) Basic parameters: Voltage, Current, Frequency, Total power factor, Active power, Reactive power, Apparent power, Active energy, Reactive energy, Individual harmonic.

Ordering Information



Num.	Code	Description
1	1	1 Metering ICs built-in: for 3*single phase measurement only
	2	2 Metering ICs built-in: for 6*single phase/2*three phases
	4	4 Metering ICs built-in: for 12*single phase /4*three phases
	6	6 Metering ICs built-in: for 18*single phase/6*three phases
	8	8 Metering ICs built-in: for 24*single phase /8*three phases
2	1	Single phase
	3	Three phases
3	T	T: CT access, Default 5A CT, 100mA CT optional, for industrial use t: CT access, 333 mV/100mA CT optional, for residential billing
	D	D: Direct access, for industrial use d: Direct access, for residential billing
	R	R: RJ45 current terminal, for industrial use r: RJ45 current terminal, for residential billing

Technical Characteristics

Model	MCM211D	MCM243d	MCM263T	MCM283D	MCM283R
Current measurement (TRMS)					
Power supply	DC/AC 85~265 ± 10 %, 50 / 60 Hz				
Consumption	< 10 VA				
Measurement channels	3*1P	4*3P/ 12*1P	6*3P/ 18*1P	8*3P/ 24*1P	8*3P/ 24*1P
Current measurement (TRMS)					
PT secondary	100mA,333mV optional	100mA, 333mV optional	Standard 1A/5A	100mA,333mV optional	100mA,333mV optional
Frequency	0 ... 9999A				
Overload	1.2 times rated continuous; 5 seconds for 10 times of the rated				
Input consumption	<0.2 VA				
Voltage measurement (TRMS)					
PT secondary	100VAC / 400VAC				
Overload	30 seconds for 2 times of the rated				
Input consumption	<0.2 VA				
Safety					
Voltage level	/			CATIII-300V	
Withstand voltage	2.5KV			4KV	
Communication					
Interface	RS485/Ethernet optional				
Protocol	Modbus RTU/TCP,IP				
Wireless module	Wi-Fi/4G/Bluetooth optional				

DCEM SERIES DC ENERGY METER

■ DC ENERGY METER



■ Introduction

DCEM series DC energy meter is mainly used to monitor the DC circuit, which can measure the basic power, demand, extreme value of the DC circuit, and measure the combined electric energy. All DC metering device is with RS485 communication interface and the accuracy class is 0.5.

DC metering offered by Blue Jay includes DCEM-4MS, DCEM-7MS, DCEM-5MC, DCEM-96S and DCEM-3MS. They are compatible with DC shunts or Hall effect current transformers, widely used in communication base stations, solar panels, vehicle charging stations, and DC panel.

■ Main Features

- Small and portable, easy to install.
- Powerful data acquisition and processing functions.
- Ultra-clear screen display, clearly view the measurement results.
- Fast response, rapid measurement of current or voltage changes.
- High precision for accurate current, voltage and resistance measurements.
- High voltage shock resistance reaches level 4; surge anti-interference to level 3.
- Electrostatic discharge immunity reaches level 3; electrical fast transient burst immunity reaches level 4.

■ Application



■ Ordering Information

Model	Current signal	Voltage signal	Measurement channel	Access	Appearance Info
DCEM-4MS	Shunt input: 0-75mV Hall CT input:5-500A	Typical 100V, Max up to 1000V	2 Channels	Shunt/ CT	Segment LCD 72*94.5*48.5mm
DCEM-7MS	Directly input default: 10A (Optional 1mA, 20mA, 100mA, 1A/5A)	Typical 100V, Max up to 600V	8 Channels	Directly access / external CT	No screen 120*110.5*50mm
DCEM-5MC	Hall CT input, default 0-4VDC	Typical 300V, Max up to 1000V	4 Channels	CT	Dot matrix LCD 89*128*41mm
DCEM-96S	Shunt input, default 75mV	Typical 300V, Max up to 600V	1 Channels	Shunt	Segment LCD 96*96*75mm
DCEM-3MS	Shunt input, default 75mV	Typical 300V, Max up to 1000V	1 Channels	Shunt	Segment LCD 50*104*63mm

Technical Characteristics

Model	DCEM-4MS	DCEM-7MS	DCEM-5MC	DCEM-96S	DCEM-3MS
Working power					
Power supply	85~265 VDC/AC	9~30 VDC	85~265 VDC		
Power consumption	≤4VA			< 5VA	≤4VA
Measurement					
Impedance	>1 KΩ/V	> 2 KΩ/V	>1 KΩ/V		
Overload	Measurement: 1.2 times Instantaneous: 2 times/10s				
Channel	2 Channels	8 Channels	4 Channels	1 Channel	1 Channel
Accuracy (depends on transducer)	1.0fs for enegyer, 0.5fs for other	U / I :0.2%fs, P :0.2%fs, Energy :0.5%fs	0.5 class	1.0fs for enegyer, 0.5fs for other	0.5%fs
Safety					
Insulation resistor	>100MΩ				
Pressure resistance	Input and power supply>4kV; input and output>4kV; power supply and output>4kV.	Input and power>2kV; input and output>2kV; power and output>2kV.			
Other					
Communication	RS485 MODBUS-RTU				
Storage environment	-30~75°C				
Working environment	-25~55°C ,Altitude ≤2000m, 98%RH, no condensation, no corrosive gas.				

POWER TRANSDUCER

Introduction

Power transducer is an electrical device used to measure, monitor, and transmit electrical parameters, typically be applied in power systems and industrial control applications.

The main function is to convert power parameters, such as voltage, current, frequency, power factor and active/reactive power, into standard voltage or current signals for monitoring, control and data collection.



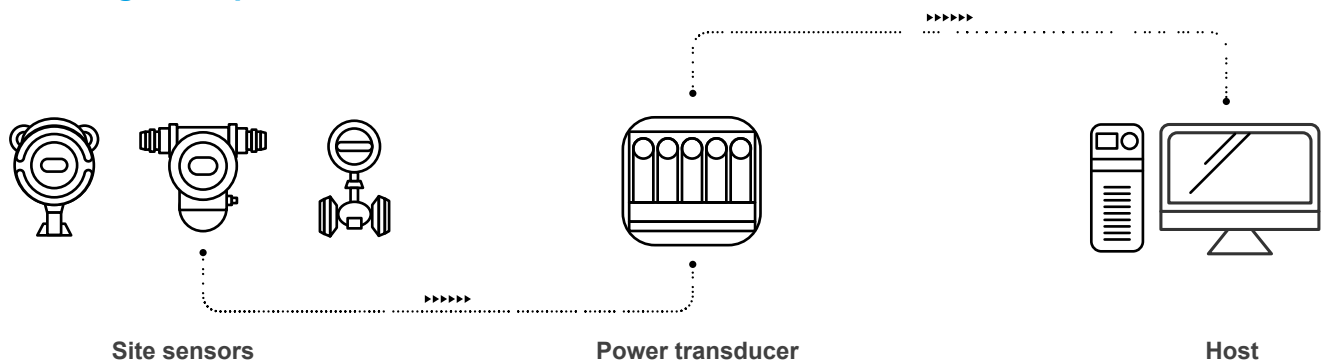
Application

- Power system monitoring and management.
- Industrial automation, motor control and protection.
- Data collection and reporting for power equipment.
- Lighting system control and energy saving.
- Battery management systems.

Main Features

- High-precision measures electrical parameters such as voltage, current, and power.
- Signal converts into standard voltage or current signals for easy transmission and processing.
- Features current isolation to safeguard against interference by isolating input and output circuits.
- RS485 remote monitoring and data analysis.
- Programmability: Offers configurability for various parameters and alarm settings.
- Real-time monitoring network performance and stability.

Working Principle



QPPX 3-PHASES PROGRAMMABLE POWER TRANSDUCER

POWER TRANSDUCER



Introduction

QPPX AC programmable transducer has 4 independent channels output, can be used to measure a wide range of electrical parameters and convert analog or digital signals to suitable for meters or PLC control systems. QPPX has signal isolation to ensure transmitted signal safety and accuracy.

Users can easily program, monitor and retrieve measurement data via panel buttons or PC interface. Users can freely configure up to 4 types of data out of 26 different electrical parameters for sampling and generating analog signal output.

Main Features

- 85~265VAC wide range voltage optional.
- 400ms response time, 2000V isolation protection.
- With RS485 port for remote control electrical data.
- Programmable settings, freely configurable parameters.
- Accuracy 0.5 class measurement and signal conversion.
- 35mm Din rail mounting, high-definition screen displays.
- 4 Channel output (max 26 types parameter for analog output).

Application

- SCADA system.
- Industrial automation applications.
- Instrumentation and control systems.
- Renewable energy systems.
- Power generation facilities.
- Utility and grid monitoring.

Technical Characteristics

Parameter	Value
Power supply	AC/DC 85~265VAC/DC
Input	Voltage: 110/220/400VAC (..Customer specified)
	Current: 1/5A AC (Customer specified)
	Frequency: 40-65Hz
Output	DC 4 ~ 20 mA / 0~20mV / 0-5V / 0-10V (..Customer specified)
Load resistance	$\leq 510\Omega$ in current output, $\geq 10K\Omega$ in voltage output
Accuracy	$\leq \pm 0.5\%$
Accuracy drift	Annual variation $< 0.2\%$
Response time	≤ 400 ms
Isolation	Input / output / power supply
Power consumption	AC < 3 VA
Case material	ABS fireproof materials
Insulation voltage	AC 2KV RMS / min
Weight	About 450g
Overload voltage	2 times 10 seconds(Instantaneous), 1.2 times in last.
Overload current	10 times 1 seconds(Instantaneous), 1.2 times in last.
Insulation resistance	When AC 500V, ≥ 100 M Ω
Dimension	87.3(W) X 132(H) X 35(D) mm
Installation	Fixed in a standard 35mm (1.38 inch) DIN rail or screwed on the cabinet.
Working condition	0 ~ 50°C / less than 95% RH (Non-condensing)
Storage conditions	-20 ~ 70°C / less than 70% RH (Non-condensing)

QP/DP SERIES

POWER TRANSDUCER

POWER TRANSDUCER



Introduction

QP/DP series power transducer adopt microcontroller technology as the core using the latest algorithms to achieve precise measurement. The AC/DC grid transducer is designed to convert AC/DC voltage or current inputs into a load-independent output signal.

QP/DP series transducer exhibits exceptional temperature stability and reliable operational performance. It derives its output signal through precise calculation of the root mean square measurement of the input signal, making it compatible with distorted waveforms.

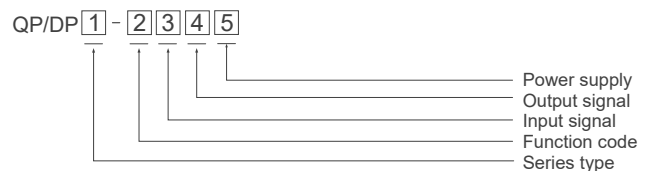
Main Features

- 200ms response time.
- 35mm Din rail mounting.
- 0.2 measurement accuracy.
- RMS measurement and output
- Support customized parameters.
- Single/Three phase independent measurement.
- AC Voltage Input: 110V,220V,380V optional.
- Output: 0-5V,0-10V,4-20mA, 0-20mA optional.

Application

- AC/DC grid systems.
- Medium and low voltage systems.
- Metering of distribution feeders, transformers.
- Generators, capacitor banks and motors.
- Measuring converter: optional association of an instantaneous Analogue outputs available (0...20 mA / 4...20 mA).

Ordering Information



Num.	Code	Description
1	QP	For AC grid measurement and transducer
	DP	For DC grid measurement and transducer
2	V	Single phase voltage
	A	Single phase current
	VX	Three phases voltage
	AX	Three phases current
	W	Three phases active power
	K	Three phases reactive power
	WK	Three phases active&reactive power
3	A0	Customized current input
	A1	0-1A
	A2	0-5A
	V0	Customized voltage input
	V1	0-5V
	V2	0-10V
	V3	0-100V
	V4	0-220V
	V5	0-400V
4	S0	Customized current output
	S1	0-20mA
	S2	4-20mA
	S3	0-5V
	S4	0-10V
5	P1	85-265VAC
	P2	24VDC
	P3	48VDC

Technical Characteristics

Power signal inputs	
Rating	../1A or ../5A C.T. connected
	110V, 230V, 400V, 415VAC
Power consumption	<1 VA voltage
	<0.2 VA current
Overload capacity	1.2 times continuous
	5 sec @ 10 times of rated current, 2sec @ 2 times of rated voltage
Frequency range	50Hz, 60Hz
Measurement output	
Standard outputs (others on request)	4~20mA, 0~5V
	0~20mA
	5~10V
	0~10V
Maximum load	<750 Ω (0-20mA, 4-20mA)
	>2000 Ω (voltage output)
Ripple	<1% peak to peak
Response time	<250ms 0-90%
	<500ms 0-99%
Measurement accuracy	
Class	± 0.5 % complying with IEC 60688
Accurate range	0 - 120%
Frequency influence	<0.02% per Hz
Load influence	<0.25% of F.S. for specific load range
Auxiliary supply	
Rating	85-265Vac/dc, optional 12V, 24V, 48VDC
Consumption	<3VA
Galvanic isolation between I/O and AUX	
Test voltage	2KV RMS 50Hz for 1 minute
Impulse	4KV 1.2/50 μ sec waveform
Environment	
Operating	-10~55°C
Storage	-40~70°C, 20 ~ 93%RH ; noncondensing

CURRENT TRANSFORMER



Introduction

The current transformer is a current conversion device, which has the dual functions of current conversion and isolation. It converts the large current of the high-voltage circuit or low-voltage circuit into a low-voltage small current (generally 5A), which is supplied to the instrument and relay protection device.

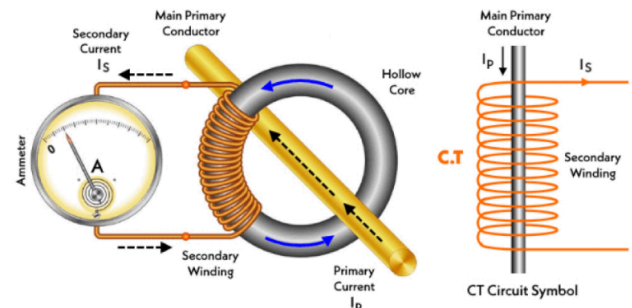
Current transformer are widely used in power systems, industrial automation, and electronic equipment to monitor the magnitude and change of current.



Application

- Wind power.
- Automatic industry.
- Solar energy generation.
- Electric vehicle charging pile.
- Power monitoring and control.
- Power meter calibration and inspection.
- Electrical equipment monitoring and protection.
- IoT device monitoring and control.

Working Principle



Main Features

- Small size, easy to install.
- Non-contact measurement reduces difficulty of installation and maintenance.
- High measurement accuracy, accurately measure size of the current.
- Effective isolation of the measured current loop and the measurement circuit.
- Rapid response to current changes, real-time monitoring and feedback of current signals.
- Various output methods, such as analog signal output, digital signal output or communication interface output.

SCT SERIES CURRENT TRANSFORMER

■ CURRENT TRANSFORMER



■ Introduction

SCT series split-core current senses AC current from 30 to 600 Amps passing through the center conductor.

Split core design permits non-contact current measurements through magnetic field induction without requiring that the primary wire be taken offline and disconnected for CT installation. This method permits a safer, easy and portable current measurement.

■ Main Features

- Split core design, low core loss and high precision.
- No need to disconnect the busbar, easy to install, and does not affect normal power consumption.
- Small size and light weight.
- Buckle opening and closing structure, easy to open and close.

■ Application

- Motor, lighting.
- Electrical instrumentation.
- Automatic control system.
- Electronic multi-function energy meter (APM series meter).
- Instrument measurement and protection.

■ Ordering Information

Model	Input(A)	Output(ma)	CT Ratio (unit:A)	Burden(Ω) Class 0.5	Size (H*W*D)	Core
SCT10	0-30A	0-30ma	1000/1	10Ω	41*30.7*31.8mm	10mm
	0-60A	0-30ma	2000/1			
	0-80A	0-26.6ma	3000/1			
SCT16	0-100A	0-100ma	1000/1		48.5*36.5*38.6mm	16mm
	0-120A	0-60ma	2000/1			
	0-150A	0-50ma	3000/1			
	0-160A	0-80ma	2000/1			
SCT24	0-100A	0-100ma	1000/1		65*52.6*40.9mm	24mm
	0-200A		2000/1			
	0-300A		3000/1			
	0-400A		4000/1			
SCT36	0-200A	0-100ma	2000/1		87*66.7*49.7mm	36mm
	0-300A		3000/1			
	0-400A		4000/1			
	0-500A		5000/1			
	0-600A		6000/1			

DPT SERIES CURRENT TRANSFORMER

■ CURRENT TRANSFORMER



■ Introduction

DPT series split core current transformer protects the current transformer through the core. It has been specially designed to facilitate their installation in new or already existing networks. Connection of conventional CTs usually requires the interruption of the primary side circuit to pass cables or bus-bars through the transformer core or to connect such cables to the primary terminals.

DPT series CT core can easily have opened and installed and connected without any supply interruption. Thus saving time and the installation costs. This split core current sensor is for the rated frequency of 50HZ voltage below 0.66KV measuring current power and relay protection.

■ Main Features

- 100A-6000A AC current input range.
- A standard secondary output rating of 5 amps.
- Revenue grade accuracy meets IEC61000-1 class 0.5 / 1.0.
- Push-open mechanism makes the installation quick and simple.
- Two built-in installation methods: place DP series CT on the wall or busbar.
- Wide inner window allows various types cables and busbars to clamp.

■ Application

- Sub-metering(MCM Series meter).
- Current transducer.
- Power factor meter.
- Instrumentation.
- KWH meter.
- Current sensing relays.
- Energy management systems .

■ Ordering Information

Model	Primary current (amp)	Burden (VA)		Size (H*W)	Core (H*W)
		Class 0.5	Class 1.0		
DPT-23	100, 150, 200, 250	/	1.5	111*90mm	32*20mm
	300	1.5	2.5		
	400	2.5	3.75		
DPT-58	250	/	1.5	146*116mm	80*50mm
	300	/	2.5		
	400	1.5	2.5		
	500, 600	2.5	5		
	750	2.5	5		
	800	3.75	5		
	1000	5	10		
DPT-88	250,300	/	1.5	147*146mm	80*80mm
	400	/	2.5		
	500, 600	1.5	2.5		
	750	2.5	5		
	800	3.75	5		
DPT-812	1000	7.5	7.5	188*146mm	120*80mm
	500, 600	/	2.5		
	750	2.5	5		
	800	5	2.5		
	1000	7.5	3.75		
DPT-816	1200, 1250, 1500	10	5	247*189mm	160*80mm
	1000	5	10		
	1500	7.5	10		
	2000	10	15		
	2500	15	20		
	3000, 4000, 5000, 6000	20	25		

MES SERIES CURRENT TRANSFORMER

■ CURRENT TRANSFORMER



■ Introduction

MES solid core current transformer is a range of low-cost molded case 5A current transformers. This solid core CT has an integral hinged plate terminal cover that will accommodate cables up to 41mm in diameter and 35mm wide.

MES solid core current transformer is supplied with a DIN-rail mounting clip and mounting feet. 9 models of solid core current transformers are available.

■ Main Features

- Silicon steel core.
- Secondary side 5A, optional 1A.
- Built-in hinged terminal cover.
- Primary current from 5A to 3000A.
- Three built-in fixing methods: busbar support mounting, din rail mounting, and tetanic bracket panel mounting.
- This AC current transformer smaller than general model in volume.
- The solid core CT matches requirements in space-limited panels.

■ Application

- Automatic industry.
- Welding equipment.
- Variable speed drives.
- Power quality monitoring.
- Variable frequency electrical appliances.
- Switched mode power supplies (SMPS).
- Battery supplied applications.
- Uninterruptible power supplies.

■ Ordering Information

Model	Primary current (amp)	Burden (VA)		Size (W*H*D)	Core (H*W)
		Class 0.5	Class 1.0		
MES-62B	5/5,10/5,15/5,20/5,25/5,30/5, 40/5,50/5,60/5,75/5,100/5,150/5	1.5	2.5	87.5 x 62 x 57mm	None (screw connection)
MES-62/20	30/5	/	2.5(4T)	87.5 x 62 x 57mm	Φ22mm
	40/5,50/5	/	2.5(3T)		
	60/5	/	2.5(2T)		
	75/5	/	1.5		
	80/5	/	2.5		
	100/5	1.5	2.5		
	150/5	2.5	3.75		
MES-62/30	200/5	3.75	5	87.5 x 62 x 57mm	31 x 31mm / Φ30mm
	30/5	/	2.5(4T)		
	40/5	/	2.5(3T)		
	50/5,60/5	/	2.5(2T)		
	75/5	/	1.5		
	100/5	1.5	2.5		
	150/5	2.5	3.75		
MES-80/30	200/5	3.75	5	86.5 x 80 x 77mm	31 x 30mm / Φ30mm
	30/5	/	2.5(4T)		
	50/5,60/5	/	2.5(2T)		
	75/5	/	1.5		
	100/5	/	2.5		
	150/5	2.5	3.75		
	200/5	3.75	5		
MES-80/40	100/5	/	2.5	86.5 x 80 x 77mm	41 x 31mm / Φ30mm
	150/5	2.5	3.75		
	200/5	3.75	5		

HCT SERIES CURRENT TRANSFORMER

■ CURRENT TRANSFORMER

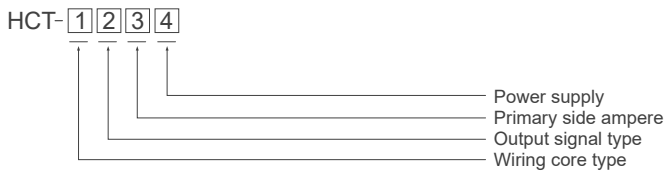


■ Introduction

The Hall effect series current transformer is a highly advanced and sophisticated device that utilizes the hall effect principle to provide precise and accurate measurements of DC currents. It offers a galvanic isolation between the primary and secondary circuits, ensuring safety and preventing any electrical interference.

The open-loop system generates an electronic output signal that can be conveniently connected to PLC or DSP terminal control systems for direct acquisition and use. With its cutting-edge design and dependable performance, this current sensor is an excellent choice for various industrial applications.

■ Ordering Information



Num.	Code	Description
1	B	Solid core
	S	Split core
2	V	Voltage output
	A	Current output
3	50	50Amp
	100	100Amp
	200	200Amp
	300	300Amp
4	15	±15V
	12	±12V

■ Main Features

- No insertion losses.
- Small size, easy installation.
- Low power consumption.
- Linear output characteristics.
- Realize remote monitoring and control.
- High immunity to external interference.
- Magnetic field principle, non-contact measurement.
- Short response time, fast response to current changes.
- DC current and AC current measurement.

■ Application

- Automatic industry.
- Welding equipment.
- Variable speed drives.
- Power quality monitoring.
- Variable frequency electrical appliances.
- Switched mode power supplies (SMPS).
- Battery supplied applications.
- Uninterruptible power supplies.

■ Technical Characteristics

Parameter	Value
Supply voltage	±12V, ±15V, +12V~+24V
Power consumption	<30mA
Rated output	±4V±1%, 0-5V(+2.5V) ±1%, 4-20mADC ±1%
Supply voltage	±12V, ±15V, +12V~+24V
Offset drift	@-40~+85°C, ≤±1
Output drift	@-40~+85°C, ≤±1
Response time	≤1s
Isolation resistance	@DC 500v, 1000MΩ
Storage environment	-40 to +85°C

FL SERIES DC SHUNT

DC SHUNT



Introduction

FL series DC shunts are available to measure DC currents. DC shunt can provide a proportional 50~100mV DC output to safely drive a moving coil instrument, overload protection or other control device.

The Manganin shunts have brass ends, available to measure currents from 0.1A up to 10000A, accurate to class 0.5 and are suitable for all DC current monitoring applications. Furthermore, various sizes, configurations, mounting styles of dc shunt are available.







Main Features

- Accuracy: class 0.5.
- Standard tolerance +/-0.5%.
- Have brass ends.
- Various styles are available.

Application

- UPS system.
- Battery management system.
- Telecommunications equipment.
- Electroplating power equipment.
- Motor control and electronic load equipment.
- Solar generators, wind power, heavy industry.

Ordering Information

Model	Picture	Material	Accuracy	Current rating	Voltage drop	Overload
FL-2 Shunt		Brass &Manganin	0.50%	1A~10000A	75mV(standard), 60mV,100mV (customized)	Rated current 120%, 2 hours
FL-2C Patent Shunt		Brass &Manganin	0.50%	1A~10000A	75mV(standard), 60mV,100mV (customized)	
FL-15 USA Shunt		Brass &Manganin& silver welding	0.25%	1A~1000A	25mV,50mV,75mV, 100mV (customized)	
FL-19 Welding Shunt		Brass &Manganin	0.50%	1A~10000A	75mV(standard), 60mV,100mV (customized)	
FL-21 Export Shunt		Brass &Manganin	0.50%	1A~10000A	75mV(standard), 60mV,100mV (customized)	
FL-27/28 High Accuracy Shunt		Brass &Manganin	0.2 & 0.1 & 0.05%	1A~10000A	75mV(standard), 60mV,100mV (customized)	

AUTOMATIC PROTECTION RELAY

Introduction

Automatic relay protection is a device used in power systems to automatically detect and respond abnormal conditions such as overcurrent, overvoltage, ground faults, etc. Alarms to protect electrical systems and equipment from potential hazards and ensure safe operation of electrical systems.

Blue Jay's power distribution safety-related products include Arc flash protection relays, Motor protection relays, WSK series, DH series switchgear temperature and humidity control equipment, etc. Products have miniature intelligence, high integration, high sensitivity and high precision, and has higher anti-electromagnetic interference performance and higher IP protection level. It is suitable for various monitoring sites to ensure electricity safety.

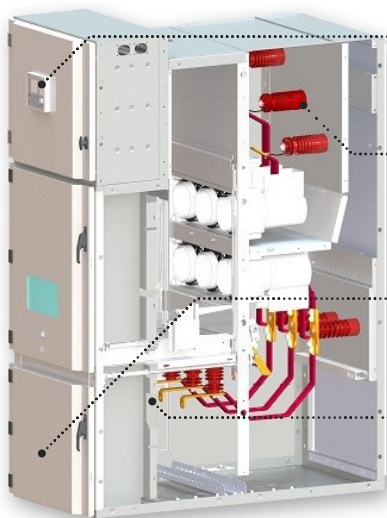


Main Features

- Automatic control, high reliability.
- Ability to record and analyze failure events.
- Modular design, convenient and quick installation and maintenance.
- Quick response: detect and cut off the faulty circuit in time to effectively prevent accidents.
- High-precision measurement and judgment ability, accurately judge the type and location of the fault.
- Versatility: such as overload protection, short circuit protection, ground fault protection, etc.
- 24 hours real-time monitoring, RS485 remote control.

Application

- Industrial automation system.
- Large municipal engineering project.
- UPS system, battery system.
- Real-time monitoring and alarm of power system.
- Substations, power plants, transmission lines, distribution lines.
- Protects motors from overloads, short circuits and motor failures.



Integrated CB control panel

- CB switch status indicate
- CB switching operation
- Integrate PMD and other functions

Thermal Monitoring (SCM-W3000)

- Surface touch or infrared sensor
- Cable terminations
- CB contact fingers
- Busbar joints

Partial Discharge Monitoring (SCM-PD3000)

- TV and ultrasonic sensor
- PD detection
- PD localization

Arc Flash Protective (AFR)

- High precision fiber probe
- Arc detection
- Arc localization
- Fault protection

DH SERIES PELTIER COOLER DEHUMIDIFIER

CABINET ENVIRONMENT MONITORING

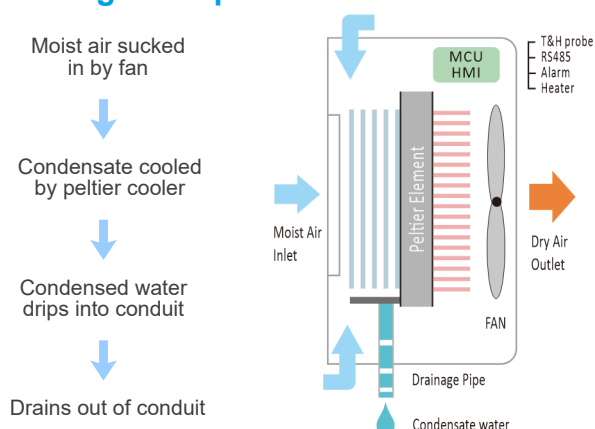


Introduction

The DH series peltier condenser adopts semiconductor refrigeration and dehumidification method, sucks humid air through the fan, condenses into water through the semiconductor refrigeration mechanism, and then discharges it from the cabinet through the conduit to achieve a good dehumidification effect. This reduces relative and absolute humidity with little increase in temperature, radically preventing accidents and device aging.

Ultra-small installation size, high efficiency and energy saving, no need for heater and fan wiring. Equipped with a data acquisition module for remote monitoring, a reliable replacement for thermostats and heater/fan combinations.

Working Principle



Main Features

- Small size, light weight, easy installation.
- Dehumidification ducts actively induce condensation, discharged gas dehumidified by heating.
- Automatic/manual dehumidification function optional, temperature and dehumidification start value adjustable.
- Humidity and temperature sensor 24-hour real-time sampling, beyond the set start value automatically induced condensation.
- Optional RS485 port, support remote control/adjustment of operating parameters and fault reporting function.
- Do not need extra sensor and probe, optional passive output node for external heater.
- Adopt special moisture-proof components to ensure normal operation in humid environments.

Application

- GIS control cabinets.
- HV/LV control switchgear.
- Ring network cabinets.
- Mechanical control cabinets.
- Box-type substations.
- Dry-type substations.

Ordering Information

Model	Max power	Air volume flow	Sensor	Material	Optional functions
DH1-20	20W	30m³/h	Built-in	ABS	-RS485 Communication -Heater (100-300V) -Alarm (Sensor disconnection alarm, Power loss alarm, Temperature and humidity over limit alarm)
DH2-60	60W	70m³/h	External	ABS	
DH3-60	60W	70m³/h	Built-in	ABS	
DH4-60	60W	70m³/h	External	Sheet metal With anti-rust spray	
DH5-80	80W	100m³/h	External	Aluminum alloy	
DH6-200	200W	140m³/h	External	Sheet metal With anti-rust spray	

Notes:

1. Only Model DH3-60 and DH6-200 can choose all three additional functions, other models can only choose two of three.
2. If the device has a built-in sensor, you cannot select sensor disconnection alarm.
3. Alarm node: default dry node, equipment failure: default normally open.

Technical Characteristics

Model	DH1-20	DH2-60	DH3-60	DH4-60	DH5-80	DH6-200
Working power						
Power supply	85V~265VAC/DC 50Hz					
Peltier rated power ⁽¹⁾	20W	60W	60W	60W	80W	200W
Air volume flow	30m³/h	70m³/h	70m³/h	70m³/h	100m³/h	140m³/h
Dehumidifying capacity	100ml/Day	250ml/Day	250ml/Day	300ml/Day	350ml/Day	600ml/Day
	@35°C,90%RH	@35°C,90%RH	@35°C,90%RH	@35°C,90%RH	@35°C,90%RH	@35°C,90%RH
Measurement and ability						
Humidity monitor range	20%RH~98%RH					
Sensor accuracy	±5%RH					
Dehumidify start threshold	45%RH~98%RH, Default 65%RH					
Environment temperature	5~60°C					
Temperature monitor range	-40~80°C					
Sensor accuracy	±1.0°C					
Heater start threshold	1~55°C, Default 5°C					
Heater power	50~500W optional					
Other						
Physical dimension	75*90*53mm	102*171*73mm	102*140*62mm	132*245*67mm	138*150*70mm	242*247*67mm
Screen	1 digital LED	2 digital LED	2 digital LED	2*3 digital LED	1 digital LED	2*3 digital LED
Standards	IEC60255-22-1					
Communication	RS485, modbus-RTU (Optional)					

Notes:

1. The choice of the rated power is related to the cabinet's inner volume and airtightness, and the general reference value is:

0.5cubic meter cabinet choose 15w, 1.0cubic meter cabinet choose 30w,
1.5cubic meter cabinet choose 40w, 2.0cubic meter cabinet choose 60w,
Cabinet volume is calculated according to the inner diameter, Length*Width*Height.

2. Sensor accuracy of 5% is tested with the inside probe, product optional external cable type sensor. Please contact the sales team before ordering.

3. Device provides passive NO contact for external heater connection, capacity is AC 250V5A. Users can free to order heaters or purchase with the DH series.

WSK SERIES CABINET THERMOSTAT

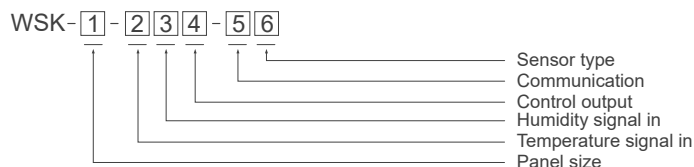
CABINET ENVIRONMENT MONITORING

Introduction

WSK series cabinet thermostat is a measurement device used on temperature and humidity control. the humidity control module is integrated in the system, greatly improving the suitability of the equipment, obtaining the temperature and humidity change from the sensor and sending the measured data to the electronic processor. The output device will then control the temperature variation within a specific range.

WSK series cabinet thermostat using load control relay output, has fast output response, accurate PID parameter auto-tuning, support, Modbus communication protocol and is built-in with various output types, allowing different systems to reach a stable control status very quickly, can be used in the worst environment for long-term use, applied to the various occasion which need temperature and humidity control.

Ordering Information

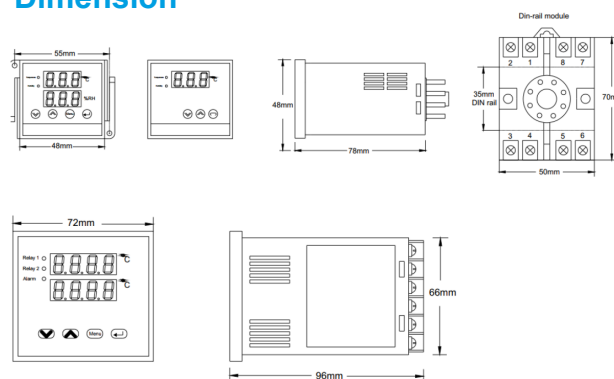


Num.	Code	Description
1	Blank	Standard 48(W) x 48(H)mm
	72	72(W) x 72(H)mm
2	W1	One channel temperature sensor input
	W2	Two channels temperature sensor input
3	S1	One channel humidity sensor input
	S2	Two channels humidity sensor input
4	K1	One channel output
	K2	Two channels output
5	Blank	Without this function
	R	One channel RS-485 communication port
6	Blank	Default select from "Related Accessories"
	T	Thermocouple (-K,-J,-T,-E,-N,-R,-S,-B,-L,-U,-YXK)
	P	Platinum RTD(-PT100,-PT1000)
	L	Linear signal (0~5V,0~10V,0~20mA,4~20mA,0~50mV)

Main Features

- 3 digital or 4 digital LED screens.
- Built-in digital filter reduces interference.
- RS485 MODBUS RTU Communication .
- Standard panel size 48x48mm / 72x72mm.
- Optional 35mm DIN rail (only 48x48mm mode).
- Heat/Fan control mode free to the configuration.
- Sensor length max 10 meters (default 3 meters).
- Accuracy temperature within 1°C & humidity within 5%.
- Support multi sensor input (K, S, T, E, J, B, N, CU50, PT100).

Dimension



Related Accessories



Model: WK04-D

- 4-pin din-rail temp. and humid. integrated type
- Temperature: -50~80°C, accuracy ±1%
- Humidity: 0~99%RH, accuracy ±5%RH



Model: WK05-D

- 3-pin din-rail temp. and humid. integrated type
- Temperature: -40~70°C, accuracy ±1%
- Humidity: 20~95%RH, accuracy ±5%RH



Model: jly01

- High-accuracy temp. and humid.sensor
- Temperature range: -40~120°C, accuracy ±0.3%
- Humidity range : 0~100%, accuracy ±3%RH

Technical Characteristics

Basic parameters	
Power supply	85V~265VAC/DC 50Hz, optional 24/48VDC
Power consumption	≤ 5VA
Dimension (W*H)	48*48mm / 72*72mm
Input	
Temperature	-40~99°C
Temp.sensor accuracy	+/-0.2 °C
Humidity	1~98%RH
Hum.sensor accuracy	+/-3.0%RH
Cable length	2 m.(3m option)
Sampling rate	400 msec/per scan
Output	
Relay output	2-channels, 250VAC, 5A 1PH, resistive load
RS485 communication	MODBUS RTU, 4800/9600 baud rates
Display	
Waterproof degree	IP40
Display	2-line x 3 character 7-segment LED display
Keypads	Menu, Enter, Increase, Decrease
Environment	
Protection	Anti-containing acid, alkali, salt gas
Storage temperature	-10~55°C
Storage humidity	20 ~ 93%RH, Non-condensing

PR SERIES DIGITAL MOTOR PROTECTION RELAY

FEEDER PROTECTION AND CONTROL



Introduction

Digital motor protection relays, integral to motor systems, ensure motor reliability and safety by detecting internal faults (overcurrent, single-phase operation, grounding, bearing issues, and abnormal winding temperatures) and monitoring external conditions to prevent grid fluctuations and voltage surges from impacting the motor.

These relays safeguard motor system stability and power grid reliability by monitoring and controlling internal and external issues and isolating interference sources. It can effectively prevent motor damage and the spread of interference back into the power grid.



Main Features

- Data recording and analysis.
- Variety of protection functions.
- Fault alarm, automatic power off function.
- RS485 remote communication and control.
- Real time motor operating status monitoring.
- Flexible configuration, can customized for specific needs.

Application

- Automated industry.
- High voltage switchgear.
- Solar and wind energy systems.
- Power plant, power grid dispatching.
- Transmission towers and substations.

Measurement Function

	PR201	PR202	PR203	PR240	PR260
Protection function					
Max. start time	●	●	●	●	●
Overload	●	●	●	●	●
Increased safety motors overload	-	-	-	●	●
Over current-jam in starting	●	●	●	●	●
Over current-jam in running	-	●	●	●	●
Phase loss	●	●	●	●	●
Current imbalance	●	●	●	●	●
Over voltage	-	●	●	●	●
Under voltage	-	●	●	●	●
Under power	-	●	●	●	●
Ground fault	-	○	○	●	●
Over current-short	-	-	-	●	●
Over temperature	-	-	-	○	○
Abnormal frequency	-	-	-	●	●
Lead / Lag PF / Low power factor	-	-	-	●	●
Welded contactor	-	-	-	●	●
External fault	-	-	-	-	●
Internal failure	-	-	-	-	●
Restart	-	-	-	●	●
Start mode					
Protection only	●	●	●	●	●
Panel control start/stop	-	-	●	●	●
Forward and reverse start	-	-	●	●	●
Wye-delta transition	-	-	●	●	●
Autotransformer closed transition	-	-	-	●	●
Two-winding	-	-	●	●	●

●With this function ○Optional function -Without this function

PR200 SERIES ECONOMIC MOTOR PROTECTION RELAY

FEEDER PROTECTION AND CONTROL



Introduction

PR200 motor protection relay comes in a small and economical appearance and designed to real time monitor three-phase power lines for abnormal conditions. can be used with motors below 690V/ 820A. optional RS485 communication port can upload monitoring data and alarm status to the remote control system.

PR200 provides various protection tripping to avoid motor failure. When PR200 senses that motor operating parameters reach preset alarm value, it will trigger DO port to warn of abnormal conditions; when abnormal parameters continue to accumulate to dangerous values, it will automatically trigger the release switch to close circuit.

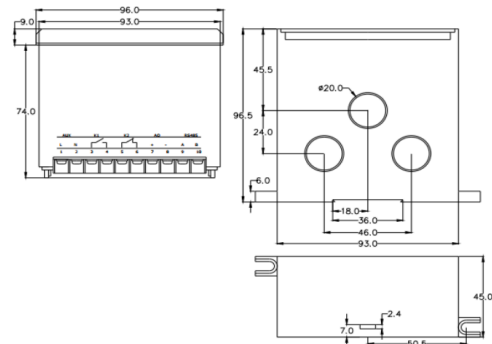
Protection Function

IEEE / ANSI C37.2	Protection functions
48	Max. start time
49, 51	Overload
51	Increased safety motors overload
51R	Overcurrent level 1 - Jam
47	Phase loss
46	Current imbalance
50G/N, 51G/N	Ground fault
50	Over current level 2 - Short
32L	Underpower
38	Overtemperature
59	Overvoltage
27	Undervoltage
81U/81O	Abnormal frequency
55	Lead / Lag PF / Low power factor
74	Welded contactor

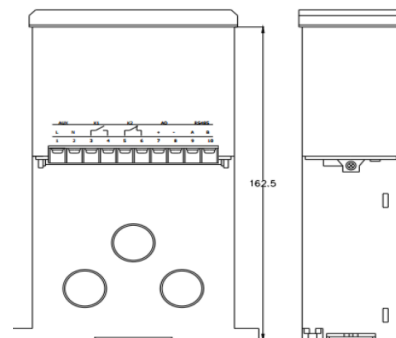
Main Features

- Built-in 2-channel relay.
- High accuracy sample calculation.
- Programmable analog output function.
- Optional RS485 communication interface.
- Free to configure each protection function.
- Wide range of power supply AC85-265V or AC80-450V.
- Have basic electrical parameter for user SCADA system.
- Build in sequence of event function, max 10 trip records.

Dimension



Split installation



Panel mounting installation

PR240 SPLIT MOTOR PROTECTION RELAY

FEEDER PROTECTION AND CONTROL



Introduction

PR240 motor protection relay can use with motors less than 690V/ 820A. It can realize a variety of control operation, such as measurement, self-diagnosis, maintenance management, field bus communication and other functions.

PR240 can real-time monitoring the scene signal, provide various protection trip to avoid motor failure. optional RS485 port can upload monitor data and alarm status to remote control system.

Protection Function

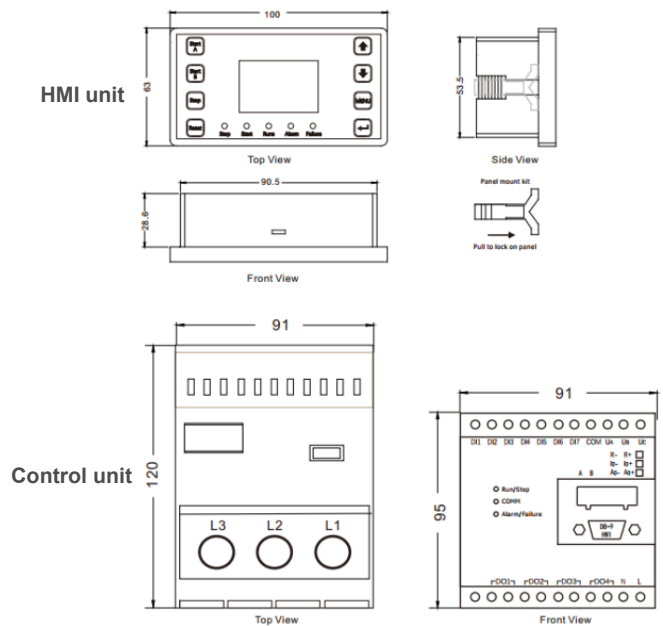
IEEE / ANSI C37.2	Protection functions
48	Max. start time
49, 51	Overload
51	Increased safety motors overload
51R	Overcurrent level 1 - Jam
47	Phase loss
46	Current imbalance
50G/N, 51G/N	Ground fault
50	Overcurrent level 2 - Short
32L	Underpower
38	Overtemperature
59	Overvoltage
27	Undervoltage
81U/81O	Abnormal frequency
55	Lead / Lag PF / Low power factor
74	Welded contactor

Main Features

- Dot matrix LCD display.
- Built-in 4-channels relay.
- Provide various start methods.
- User free to configure each protection function.
- Build in sequence of event function, max 100 trip records.
- With programmable analog output function.
- Optional RS-485 communication interface.

Dimension

Unit: mm



PR260 SERIES MODULAR MOTOR PROTECTION RELAY

FEEDER PROTECTION AND CONTROL

Introduction

PR260 series motor protection relay is suitable for protecting and monitoring the low-voltage motors with rated voltage less than 690V and rated current up to 820A. It equipped with 7-channels switch monitoring, can be configured as needed. It supports Modbus-RTU communication bus and can transmit monitoring data and alarm status to the remote control system.

PR260 can real time monitor status of motor and detect various faults, such as abnormal start, overload, overcurrent, overheating, blocked rotor, phase loss, unbalance, under voltage, overvoltage, under power, underload, grounding or leakage.

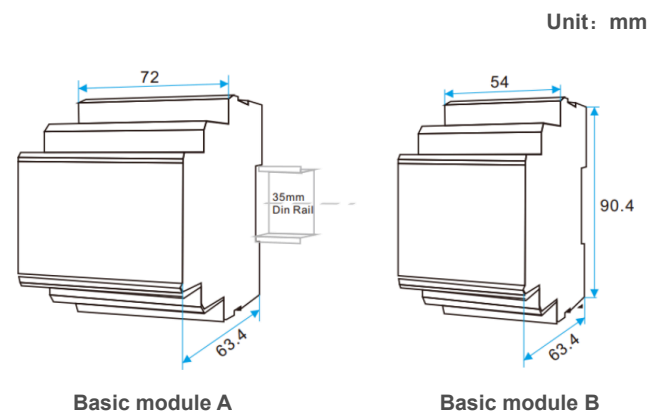
Protection Function

IEEE / ANSI C37.2	Protection functions
48	Max. start time
49, 51	Overload
51	Increased safety motors overload
51R	Overcurrent level 1 - Jam
47	Phase loss
46	Current imbalance
50G/N, 51G/N	Ground fault
50	Overcurrent level 2 - Short
32L	Underpower
38	Overtemperature
59	Overvoltage
27	Undervoltage
81U/81O	Abnormal frequency
55	Lead / Lag PF / Low power factor
74	Welded contactor
86 or 94	External fault
	Data logging
	Wave capture

Main Features

- Record recent 99 trip records.
- Standard RS485 communication.
- Provide 4 digital outputs, and 7 digital inputs.
- Full power measurement, dot matrix LCD display.
- A control unit uses a CT connection with max 5A input.
- Multiple startup modes for different wiring applications.
- Suitable for motors under 0.66KV and any current range.
- Optional waveform capture function for easy fault tracing.
- Extra optional modular: PR-26C extra 2* RS485 or 2* Profibus-DP port.
- PR-265 extra programmable 11*DI and 6*DO.

Dimension



Technical Characteristics

	PR201	PR202	PR203	PR240	PR260
Electrical parameters					
Auxiliary power	85-265 VAC/DC				
Power consumption	<10 VA				
Insulation resistance	> 100 MΩ				
Alarm relay	5 A @250V AC, or 5 A @30V DC (NO contact)				
Working environment					
Motor rated voltage	AC 380V / AC 660V				
Motor rated current	0.5-820 A				
Working temperature	-10°C ~ +55°C				
Storage temperature	-25°C ~ +70°C				
Relative humidity	< 93% RH				
Altitude	No more than 3000 m				
Atmospheric conditions	Operating place must not have the explosive medium and contain Gases that corrode metals and damage insulating and conductive medium.				
Electrical test					
Electrostatic discharge	IEC 61000-4-2, Level III				
Electrical fast transient burst	IEC 61000-4-4, Level III				
Surge shock	IEC 61000-4-5 , Level III				
Withstanding voltage	IEC 61010-1, AC 2kV/1min Between power / input / output				
Other					
Digital output	2	2	3	4	4
Digital input	-	-	6	7	7
Analog output	-	1	-	1	1
RS485, Modbus-RTU	-	●	●	●	●
Profibus-DP	-	-	-	-	○
SOE	-	10	10	99	99
Record	-	-	-	●	●
Wave capture	-	-	-	-	●
Display	LED	LED	LCD	LED	LED

CT SELECTION TABLE

FEEDER PROTECTION AND CONTROL



CT selection table

Motor rated power (Kw)	Rated current (A)	Default value
0.06	0.22	10A (CT306)
0.12	0.42	
0.37	1	
0.55	1.5	
0.75	2	
1.1	2.5	
2.2	5	100A (CT305)
3	6.5	
5.5	11	
7.5	14.8	
11	21	
15	28.5	
18.5	35	
22	42	
30	57	
37	69	
45	81	200A (CT304)
55	100	
75	135	
90	165	
110	200	

Rated power (Kw)	Rated current (A)	Connected ECT	Expand CT
132	240	CT306 Set Ext.CT 5A	500/5
160	285		
200	352		
220	420		
250	480		

Notes:

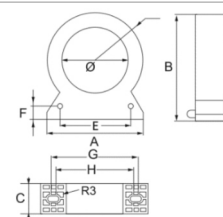
1. External protection CT selection guide, typical in 380V motor system
2. If motor rated current more than 200A, need use 5A external CT

External current transformer (ECT)

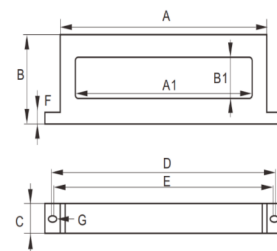
Motor rated power (Kw)	Rated current (A)	Default value
Measurement 100A-200A	10-100A	0-10A
Secondary to protector 100mA	100A/50mA	10A/5mA
Maximum cable size 30mm	20mm	9mm

Zero-sequence current transformer (ZCT)

Current range	Dimension (mm)								
	φ	A	B	C	D	E	F	G	H
16-100A	45	77	85	24	38	54	9	64	54
100-250A	80	112	122	28	56	80	14	89	80
250-400A	100	131	136	24	66	96	14	108	107
400-800A	150	200	209	28	100	145	16.5	184	177



Current range	Dimension (mm)								
	A1	B1	A	B	C	D	E	F	G
0-63A	100	20	133	50	16	144	140	3	2.0
0-100A	100	25	133	60	24	154	143	9	2.5
0-225A	140	32	172	72	24	189	184	9	2.5
0-250A	180	32	212	72	24	229	224	9	2.5
0-400A	220	45	254	86	24	269	264	11	2.5
0-630A	260	45	294	86	24	309	304	11	2.5
0-1600A	300	45	334	86	24	349	344	11	2.5
0-4000A	420	45	454	86	24	469	464	11	2.5



RCM SERIES AC RESIDUAL CURRENT MONITOR

FEEDER PROTECTION AND CONTROL

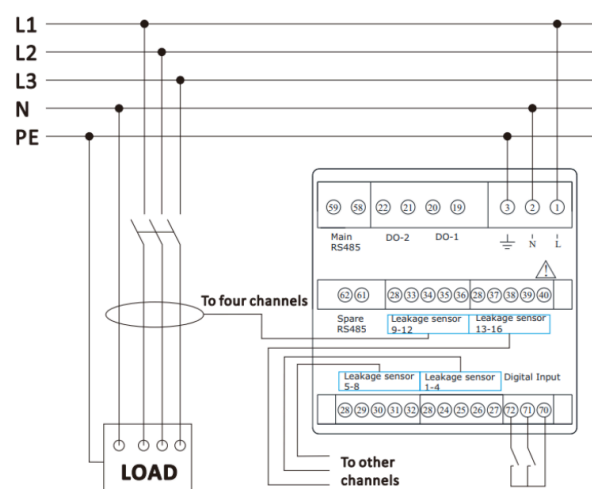


Introduction

The RCM series (residual current monitor) is designed for measuring residual current and operating temperature in TT and TN-S systems. It can receive signals from multiple sensors to detect and assess faults, residual currents, and operating currents in grounded power supplies.

RCM series can be configured with selected current transformers or temperature sensors to detect parameters and set alarm or trip thresholds. RS485 port allow data transmission to SCADA systems.

Wiring Method



Main Features

- Max 100 history events records with date and time stamp.
- Standard RS485 communication port, Modbus-RTU.
- Support manual self-check, optional 2-way passive open input.
- Backlit graphical display (7-segment display) and indicate LEDs.
- Max 16 measuring channels for residual current or temperature input.
- Residual current alarm setting range 300 ~ 1000mA, minimal adjustment step 1mA.
- The temperature alarm setting range 50.0 ~ 100.0°C, minimal adjustment step is 0.1°C; With 2 relay outputs, free to configuration various protection methods.
- Building in buzzer to provide sound alarm, automatically jump to the alarm interface when protection occurs, key buttons can manual silencing and reset.

Application

- Automated industry.
- Electric vehicle charging pile.
- Stationary electrical equipment and systems.
- Power systems and distribution systems.
- Monitoring critical cable and electrical box temperatures.

Ordering Information

Model	Description
RCM-16IN	16 Residual Current sensor
RCM-8IN8T	8 Residual Current sensor, 8 Temperature sensor
RCM-8IN	8 Residual Current sensor
RCM-4IN4T	4 Residual Current sensor, 4 Temperature sensor

Technical Characteristics

Electrical characteristics	
Power supply	85~265 VAC/DC
Consumption	<5 VA
Residual current accuracy	1%
Temperature accuracy	±2°C
Data refresh rate	1 Sec
Binary inputs	Passive node, isolation voltage 2000VAC
Relay output	AC 250V/5A or DC 30V/5A, 2500V opt coupler isolation
Comm port	RS485 Modbus-RTU protocol, baud rate up to 19200bps
Others	
Physical dimension	96*96*75mm (W*H*D)
Protection class	IP20
Weight	0.55kg
Working environment	-10~55°C
Measurement category	CAT-III, pollution class 2
Insulation capacity	> AC 2kV signal power output
Reference standard	IEC 61000-4-2,class III IEC 61000-4-3,class III IEC 61000-4-4,class IV IEC 61000-4-5,class IV IEC 61000-4-6,class III IEC 61000-4-8,class III IEC 61000-4-11,class III

ELR SERIES EARTH LEAKEGE RELAY

FEEDER PROTECTION AND CONTROL



Introduction

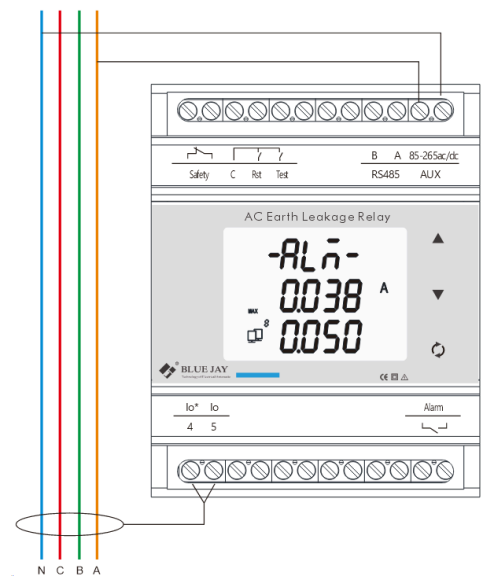
The ELR Earth Leakage Relay enhances electrical safety by continuously monitoring leakage current with advanced residual current transformer . When leakage current exceeds the preset threshold, it instantly triggers an alarm for early fault detection.

Featuring an alarm hold function, it retains the alarm signal until reset, simplifying fault diagnosis. Ideal for preventing equipment damage, reducing downtime, and ensuring personnel safety, the ELR Series provides reliable and efficient protection for your power system.

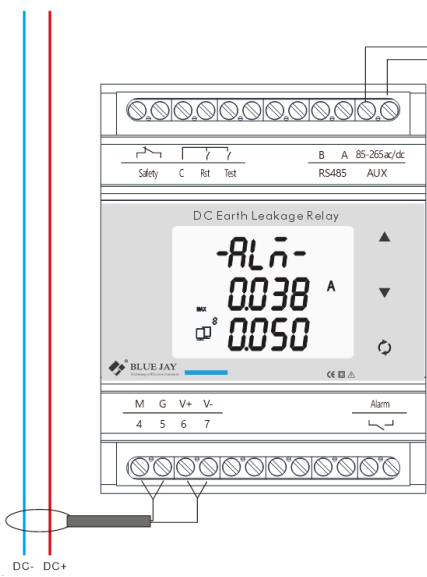
Ordering Information

Model	Description
ELR-4MA	<ul style="list-style-type: none"> Use for AC measurement Compatible with Residual current transformer Adjustable alarm threshold 6mA-60A
ELR-4MD	<ul style="list-style-type: none"> Use for DC measurement Compatible with Hall effect current transformer Adjustable alarm threshold 1-30mA/5-100mA

Wiring Method



ELR-4MA



ELR-4MD

Application

- Smart grid system;
- Medium and low voltage systems;
- Commercial and residential buildings;
- Utilities and power distribution systems;
- Motor control panels and switchboards;
- DC system leakage current measurement;
- Industrial control system (PLC, SCADA, DCS).

Main Features

- Digital measured value display via LCD display;
- Current transformer connection monitoring;
- Internal/external test/reset button;
- One separate alarm output relays;
- Adjustable trip levels and time delay;
- Standard 35mm din rail mounting;
- 1-30mA / 5-100mA /6 mA-60A adjustable response values;

Technical Characteristics

Parameter	ELR-4MA	ELR-4MD
Auxiliary power supply	85-265Vac/dc	
Power consumption	≤4VA	
Frequency	50/60Hz, Accuracy ±0.01Hz	
Leakage current alarm threshold	6mA-60A, can be set	1-30mA / 5-100mA, can be set
Time delay	50ms-10sec, can set as need.	
Communication	RS-485 MODBUS-RTU	
Display	LCD with backlit	
Withstand voltage	2.5KV 1min	
Insulation	Input, output, power supply to shell >5MΩ	
Storage environment	-40~70°C	
Working environment	-25~55°C Altitude ≤2500m, 0~95%RH, non-condensing, non-corrosive gas	

AFR SERIES ARC PROTECTION RELAY

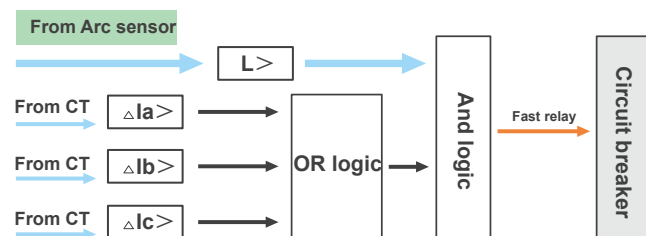
BUSBAR PROTECTION RELAY



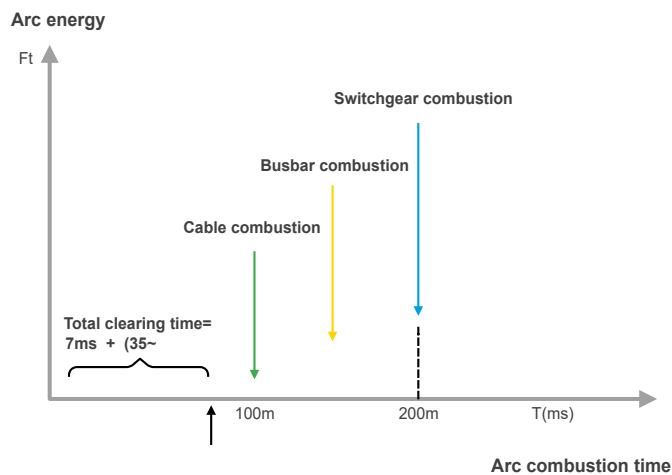
Introduction

AFR series arc protection relay detects electrical arcs in medium and low-voltage equipment, isolating power to minimize the risk of electrical fires. It works to prevent arcing faults in busbars, metal-clad switchgear, and cable boxes.

Arc flash relays can connect with remote light sensors to detect arc flashes and send a trip signal to cut off power. They can be used for stand-alone devices or embedded in complex switchgear layouts.



Arc Hazard Diagram



Main Features

- Accurate and real-time monitoring arc signals.
- High temperatures and humidity resistance.
- Fast response, relay tripping in less than 10 ms.
- Equipped with RS485 communication interface.
- Support ST visible light and ST ultraviolet sensor access.
- Complete SOE records, all information power-off retention.
- Support automatic reclosing function to improve system availability.

Application

- Capacitor cabinet.
- High voltage switchgear.
- Electric power substation.
- Large municipal engineering project.
- Medium and low voltage switchgear.
- Thermal power plant electrical section switchgear.
- Wind turbine & Wind farm and photovoltaic station switchgear.

AFR-M ARC FLASH PROTECTION RELAY

BUSBAR PROTECTION RELAY



Introduction

AFR-M busbar ARC flash protection relay represents a cost-effective and highly efficient solution designed to mitigate arc-fault damage. AFR-M detects the emitted light from an arc flash and promptly triggers tripping relay in both low-voltage (LV) and medium-voltage (MV) electrical networks.

Equipped with up to 48 ultraviolet optical sensors, the relay operates on preset programs, ensuring optimal protection for the secure operation of bus circuits.

Terminal Definition

A-Pwr board	B-DO relay board	C-Arc sensor terminal-1	D-Arc sensor terminal-2	E-Arc sensor terminal-3	F-Arc sensor terminal-4	G-DO Comm board	H-Current sensor terminal
A01 Terminal Label A02 I/O Channel A03 I/O Channel A04 I/O Channel A05 I/O Channel A06 I/O Channel A07 I/O Channel A08 I/O Channel A09 I/O Channel A10 I/O Channel A11 Arc Sensor C1 A12 Arc Sensor C2 A13 Arc Sensor C3 A14 Arc Sensor C4 A15 Arc Sensor C5 A16 Arc Sensor C6 A17 Arc Sensor C7 A18 Arc Sensor C8 A19 Arc Sensor C9 A20 Arc Sensor C10 A21 Arc Sensor C11 A22 Arc Sensor C12	B01 DO-1 B02 DO-1 B03 DO-2 B04 DO-2 B05 DO-3 B06 DO-3 B07 DO-4 B08 DO-4 B09 DO-5 B10 DO-5 B11 DO-6 B12 DO-6 B13 DO-7 B14 DO-7 B15 DO-8 B16 DO-8 B17 DO-9 B18 DO-9 B19 DO-10 B20 DO-10 B21 DO-11 B22 DO-11	C01 ARC01 C02 ARC02 C03 ARC03 C04 ARC04 C05 ARC05 C06 ARC06 C07 ARC07 C08 ARC08 C09 ARC09 C10 ARC10 C11 ARC11 C12 ARC12	D01 ARC13 D02 ARC14 D03 ARC15 D04 ARC16 D05 ARC17 D06 ARC18 D07 ARC19 D08 ARC20 D09 ARC21 D10 ARC22 D11 ARC23 D12 ARC24	E01 ARC25 E02 ARC26 E03 ARC27 E04 ARC28 E05 ARC29 E06 ARC30 E07 ARC31 E08 ARC32 E09 ARC33 E10 ARC34 E11 ARC35 E12 ARC36	F01 ARC37 F02 ARC38 F03 ARC39 F04 ARC40 F05 ARC41 F06 ARC42 F07 ARC43 F08 ARC44 F09 ARC45 F10 ARC46 F11 ARC47 F12 ARC48	G01 RS485+ G02 RS485- G03 RS485+ G04 RS485- G05 RS485+ G06 RS485- G07 RS485+ G08 RS485-	H01 I01 I02 I03 H02 I04 I05 I06 H03 I07 I08 I09 H04 I10 I11 I12 H05 I13 I14 I15 H06 I16 I17 I18 H07 I19 I20 I21 H08 I22 I23 I24 H09 I25 I26 I27 H10 I28 I29 I30 H11 I31 I32 I33 H12 I34 I35 I36 H13 I37 I38 I39 H14 I40 I41 I42 H15 I43 I44 I45 H16 I46 I47 I48 H17 I49 I50 I51 H18 I52 I53 I54 H19 I55 I56 I57 H20 I58 I59 I60 H21 I61 I62 I63 H22 I64 I65 I66 H23 I67 I68 I69 H24 I70 I71 I72 H25 I73 I74 I75 H26 I76 I77 I78 H27 I79 I80 I81 H28 I82 I83 I84 H29 I85 I86 I87 H30 I88 I89 I90 H31 I91 I92 I93 H32 I94 I95 I96 H33 I97 I98 I99 H34 I100 I101 I102 H35 I103 I104 I105 H36 I106 I107 I108 H37 I109 I110 I111 H38 I112 I113 I114 H39 I115 I116 I117 H40 I118 I119 I120 H41 I121 I122 I123 H42 I124 I125 I126 H43 I127 I128 I129 H44 I130 I131 I132 H45 I133 I134 I135 H46 I136 I137 I138 H47 I139 I140 I141 H48 I142 I143 I144 H49 I145 I146 I147 H50 I148 I149 I150 H51 I151 I152 I153 H52 I154 I155 I156 H53 I157 I158 I159 H54 I160 I161 I162 H55 I163 I164 I165 H56 I166 I167 I168 H57 I169 I170 I171 H58 I172 I173 I174 H59 I175 I176 I177 H60 I178 I179 I180 H61 I181 I182 I183 H62 I184 I185 I186 H63 I187 I188 I189 H64 I190 I191 I192 H65 I193 I194 I195 H66 I196 I197 I198 H67 I199 I200 I201 H68 I202 I203 I204 H69 I205 I206 I207 H70 I208 I209 I210 H71 I211 I212 I213 H72 I214 I215 I216 H73 I217 I218 I219 H74 I220 I221 I222 H75 I223 I224 I225 H76 I226 I227 I228 H77 I229 I230 I231 H78 I232 I233 I234 H79 I235 I236 I237 H80 I238 I239 I240 H81 I241 I242 I243 H82 I244 I245 I246 H83 I247 I248 I249 H84 I250 I251 I252 H85 I253 I254 I255 H86 I256 I257 I258 H87 I259 I260 I261 H88 I262 I263 I264 H89 I265 I266 I267 H90 I268 I269 I270 H91 I271 I272 I273 H92 I274 I275 I276 H93 I277 I278 I279 H94 I280 I281 I282 H95 I283 I284 I285 H96 I286 I287 I288 H97 I289 I290 I291 H98 I292 I293 I294 H99 I295 I296 I297 H100 I298 I299 I300 H101 I301 I302 I303 H102 I304 I305 I306 H103 I307 I308 I309 H104 I310 I311 I312 H105 I313 I314 I315 H106 I316 I317 I318 H107 I319 I320 I321 H108 I322 I323 I324 H109 I325 I326 I327 H110 I328 I329 I330 H111 I331 I332 I333 H112 I334 I335 I336 H113 I337 I338 I339 H114 I340 I341 I342 H115 I343 I344 I345 H116 I346 I347 I348 H117 I349 I350 I351 H118 I352 I353 I354 H119 I355 I356 I357 H120 I358 I359 I360 H121 I361 I362 I363 H122 I364 I365 I366 H123 I367 I368 I369 H124 I370 I371 I372 H125 I373 I374 I375 H126 I376 I377 I378 H127 I379 I380 I381 H128 I382 I383 I384 H129 I385 I386 I387 H130 I388 I389 I390 H131 I391 I392 I393 H132 I394 I395 I396 H133 I397 I398 I399 H134 I400 I401 I402 H135 I403 I404 I405 H136 I406 I407 I408 H137 I409 I410 I411 H138 I412 I413 I414 H139 I415 I416 I417 H140 I418 I419 I420 H141 I421 I422 I423 H142 I424 I425 I426 H143 I427 I428 I429 H144 I430 I431 I432 H145 I433 I434 I435 H146 I436 I437 I438 H147 I439 I440 I441 H148 I442 I443 I444 H149 I445 I446 I447 H150 I448 I449 I450 H151 I451 I452 I453 H152 I454 I455 I456 H153 I457 I458 I459 H154 I460 I461 I462 H155 I463 I464 I465 H156 I466 I467 I468 H157 I469 I470 I471 H158 I472 I473 I474 H159 I475 I476 I477 H160 I478 I479 I480 H161 I481 I482 I483 H162 I484 I485 I486 H163 I487 I488 I489 H164 I490 I491 I492 H165 I493 I494 I495 H166 I496 I497 I498 H167 I499 I500 I501 H168 I502 I503 I504 H169 I505 I506 I507 H170 I508 I509 I510 H171 I511 I512 I513 H172 I514 I515 I516 H173 I517 I518 I519 H174 I520 I521 I522 H175 I523 I524 I525 H176 I526 I527 I528 H177 I529 I530 I531 H178 I532 I533 I534 H179 I535 I536 I537 H180 I538 I539 I540 H181 I541 I542 I543 H182 I544 I545 I546 H183 I547 I548 I549 H184 I550 I551 I552 H185 I553 I554 I555 H186 I556 I557 I558 H187 I559 I560 I561 H188 I562 I563 I564 H189 I565 I566 I567 H190 I568 I569 I570 H191 I571 I572 I573 H192 I574 I575 I576 H193 I577 I578 I579 H194 I580 I581 I582 H195 I583 I584 I585 H196 I586 I587 I588 H197 I589 I590 I591 H198 I592 I593 I594 H199 I595 I596 I597 H200 I598 I599 I600 H201 I601 I602 I603 H202 I604 I605 I606 H203 I607 I608 I609 H204 I610 I611 I612 H205 I613 I614 I615 H206 I616 I617 I618 H207 I619 I620 I621 H208 I622 I623 I624 H209 I625 I626 I627 H210 I628 I629 I630 H211 I631 I632 I633 H212 I634 I635 I636 H213 I637 I638 I639 H214 I640 I641 I642 H215 I643 I644 I645 H216 I646 I647 I648 H217 I649 I650 I651 H218 I652 I653 I654 H219 I655 I656 I657 H220 I658 I659 I660 H221 I661 I662 I663 H222 I664 I665 I666 H223 I667 I668 I669 H224 I670 I671 I672 H225 I673 I674 I675 H226 I676 I677 I678 H227 I679 I680 I681 H228 I682 I683 I684 H229 I685 I686 I687 H230 I688 I689 I690 H231 I691 I692 I693 H232 I694 I695 I696 H233 I697 I698 I699 H234 I700 I701 I702 H235 I703 I704 I705 H236 I706 I707 I708 H237 I709 I710 I711 H238 I712 I713 I714 H239 I715 I716 I717 H240 I718 I719 I720 H241 I721 I722 I723 H242 I724 I725 I726 H243 I727 I728 I729 H244 I730 I731 I732 H245 I733 I734 I735 H246 I736 I737 I738 H247 I739 I740 I741 H248 I742 I743 I744 H249 I745 I746 I747 H250 I748 I749 I750 H251 I751 I752 I753 H252 I754 I755 I756 H253 I757 I758 I759 H254 I760 I761 I762 H255 I763 I764 I765 H256 I766 I767 I768 H257 I769 I770 I771 H258 I772 I773 I774 H259 I775 I776 I777 H260 I778 I779 I780 H261 I781 I782 I783 H262 I784 I785 I786 H263 I787 I788 I789 H264 I790 I791 I792 H265 I793 I794 I795 H266 I796 I797 I798 H267 I799 I800 I801 H268 I802 I803 I804 H269 I805 I806 I807 H270 I808 I809 I810 H271 I811 I812 I813 H272 I814 I815 I816 H273 I817 I818 I819 H274 I820 I821 I822 H275 I823 I824 I825 H276 I826 I827 I828 H277 I829 I830 I831 H278 I832 I833 I834 H279 I835 I836 I837 H280 I838 I839 I840 H281 I841 I842 I843 H282 I844 I845 I846 H283 I847 I848 I849 H284 I850 I851 I852 H285 I853 I854 I855 H286 I856 I857 I858 H287 I859 I860 I861 H288 I862 I863 I864 H289 I865 I866 I867 H290 I868 I869 I870 H291 I871 I872 I873 H292 I874 I875 I876 H293 I877 I878 I879 H294 I880 I881 I882 H295 I883 I884 I885 H296 I886 I887 I888 H297 I889 I890 I891 H298 I892 I893 I894 H299 I895 I896 I897 H300 I898 I899 I900 H301 I901 I902 I903 H302 I904 I905 I906 H303 I907 I908 I909 H304 I910 I911 I912 H305 I913 I914 I915 H306 I916 I917 I918 H307 I919 I920 I921 H308 I922 I923 I924 H309 I925 I926 I927 H310 I928 I929 I930 H311 I931 I932 I933 H312 I934 I935 I936 H313 I937 I938 I939 H314 I940 I941 I942 H315 I943 I944 I945 H316 I946 I947 I948 H317 I949 I950 I951 H318 I952 I953 I954 H319 I955 I956 I957 H320 I958 I959 I960 H321 I961 I962 I963 H322 I964 I965 I966 H323 I967 I968 I969 H324 I970 I971 I972 H325 I973 I974 I975 H326 I976 I977 I978 H327 I979 I980 I981 H328 I982 I983 I984 H329 I985 I986 I987 H330 I988 I989 I990 H331 I991 I992 I993 H332 I994 I995 I996 H333 I997 I998 I999 H334 I1000 I1001 I1002 H335 I1003 I1004 I1005 H336 I1006 I1007 I1008 H337 I1009 I1010 I1011 H338 I1012 I1013 I1014 H339 I1015 I1016 I1017 H340 I1018 I1019 I1020 H341 I1021 I1022 I1023 H342 I1024 I1025 I1026 H343 I1027 I1028 I1029 H344 I1030 I1031 I1032 H345 I1033 I1034 I1035 H346 I1036 I1037 I1038 H347 I1039 I1040 I1041 H348 I1042 I1043 I1044 H349 I1045 I1046 I1047 H350 I1048 I1049 I1050 H351 I1051 I1052 I1053 H352 I1054 I1055 I1056 H353 I1057 I1058 I1059 H354 I1060 I1061 I1062 H355 I1063 I1064 I1065 H356 I1066 I1067 I1068 H357 I1069 I1070 I1071 H358 I1072 I1073 I1074 H359 I1075 I1076 I1077 H360 I1078 I1079 I1080 H361 I1081 I1082 I1083 H362 I1084 I1085 I1086 H363 I1087 I1088 I1089 H364 I1090 I1091 I1092 H365 I1093 I1094 I1095 H366 I1096 I1097 I1098 H367 I1099 I1100 I1101 H368 I1102 I1103 I1104 H369 I1105 I1106 I1107 H370 I1108 I1109 I1110 H371 I1111 I1112 I1113 H372 I1114 I1115 I1116 H373 I1117 I1118 I1119 H374 I1120 I1121 I1122 H375 I1123 I1124 I1125 H376 I1126 I1127 I1128 H377 I1129 I1130 I1131 H378 I1132 I1133 I1134 H379 I1135 I1136 I1137 H380 I1138 I1139 I1140 H381 I1141 I1142 I1143 H382 I1144 I1145 I1146 H383 I1147 I1148 I1149 H384 I1150 I1151 I1152 H385 I1153 I1154 I1155 H386 I1156 I1157 I1158 H387 I1159 I1160 I1161 H388 I1162 I1163 I1164 H389 I1165 I1166 I1167 H390 I1168 I1169 I1170 H391 I1171 I1172 I1173 H392 I1174 I1175 I1176 H393 I1177 I1178 I1179 H394 I1180 I1181 I1182 H395 I1183 I1184 I1185 H396 I1186 I1187 I1188 H397 I1189 I1190 I1191 H398 I1192 I1193 I1194 H399 I1195 I1196 I1197 H400 I1198 I1199 I1200 H401 I1201 I1202 I1203 H402 I1204 I1205 I1206 H403 I1207 I1208 I1209 H404 I1210 I1211 I1212 H405 I1213 I1214 I1215 H406 I1216 I1217 I1218 H407 I1219 I1220 I1221 H408 I1222 I1223 I1224 H409 I1225 I1226 I1227 H410 I1228 I1229 I1230 H411 I1231 I1232 I1233 H412 I1234 I1235 I1236 H413 I1237 I1238 I1239 H414 I1240 I1241 I1242 H415 I1243 I1244 I1245 H416 I1246 I1247 I1248 H417 I1249 I1250 I1251 H418 I1252 I1253 I1254 H419 I1255 I1256 I1257 H420 I1258 I1259 I1260 H421 I1261 I1262 I1263 H422 I1264 I1265 I1266 H423 I1267 I1268 I1269 H424 I1270 I1271 I1272 H425 I1273 I1274 I1275 H426 I1276 I1277 I1278 H427 I1279 I1280 I1281 H428 I1282 I1283 I1284 H429 I1285 I1286 I1287 H430 I1288 I1289 I1290 H431 I1291 I1292 I1293 H432 I1294 I1295 I1296 H433 I1297 I1298 I1299 H434 I1300 I1301 I1302 H435 I1303 I1304 I1305 H436 I1306 I1307 I1308 H437 I1309 I1310 I1311 H438 I1312 I1313 I1314 H439 I1315 I1316 I1317 H440 I1318 I1319 I1320 H441 I1321 I1322 I1323 H442 I1324 I1325 I1326 H443 I1327 I1328 I1329 H444 I1330 I1331 I1332 H445 I1333 I1334 I1335 H446 I1336 I1337 I1338 H447 I1339 I1340 I1341 H448 I1342 I1343 I1344 H449 I1345 I1346 I1347 H450 I1348 I1349 I1350 H451 I1351 I1352 I1353 H452 I1354 I1355 I1356 H453 I1357 I1358 I1359 H454 I1360 I1361 I1362 H455 I1363 I1364 I1365 H456 I1366 I1367 I1368 H457 I1369 I1370 I1371 H458 I1372 I1373 I1374 H459 I1375 I1376 I1377 H460 I1378 I1379 I1380 H461 I1381 I1382 I1383 H462 I1384 I1385 I1386 H463 I1387 I1388 I1389 H464 I1390 I1391 I1392 H465 I1393 I1394 I1395 H466 I1396 I1397 I1398 H467 I1399 I1400 I1401 H468 I1402 I1403 I1404 H469 I1405 I1406 I1407 H470 I1408 I1409 I1410 H471 I1411 I1412 I1413 H472 I1414 I1415 I1416 H473 I1417 I1418 I1419 H474 I1420 I1421 I1422 H475 I1423 I1424 I1425 H476 I1426 I1427 I1428 H477 I1429 I1430 I1431 H478 I1432 I1433 I1434 H479 I1435 I1436 I1437 H480 I1438 I1439 I1440 H481 I1441 I1442 I1443 H482 I1444 I1445 I1446 H483 I1447 I1448 I1449 H484 I1450 I1451 I1452 H485 I1453 I1454 I1455 H486 I1456 I1457 I1458 H487 I1459 I1460 I1461 H488 I1462 I1463 I1464 H489 I1465 I1466 I1467 H490 I1468 I1469 I1470 H491 I1471 I1472 I1473 H492 I1474 I1475 I1476 H493 I1477 I1478 I1479 H494 I1480 I1481 I1482 H495 I1483 I1484 I1485 H496 I1486 I1487 I1488 H497 I1489 I1490 I1491 H498 I1492 I1493 I1494 H499 I1495 I1496 I1497 H500 I1498 I1499 I1500 H501 I1501 I1502 I1503 H502 I1504 I1505 I1506 H503 I1507 I1508 I1509 H504 I1510 I1511 I1512 H505 I1513 I1514 I1515 H506 I1516 I1517 I1518 H507 I1519 I1520 I1521 H508 I1522 I1523 I1524 H509 I1525 I1526 I1527 H510 I1528 I1529 I1530 H511 I1531 I1532 I1533 H512 I1534 I1535 I1536 H513 I1537 I1538 I1539 H514 I1540 I1541 I1542 H515 I1543 I1544 I1545 H516 I1546 I1547 I1548 H517 I1549 I1550 I1551 H518 I1552 I1553 I1554 H519 I1555 I1556 I1557 H520 I1558 I1559 I1560 H521 I1561 I1562 I1563 H522 I1

AFR-3S ARC FLASH PROTECTION RELAY

BUSBAR PROTECTION RELAY

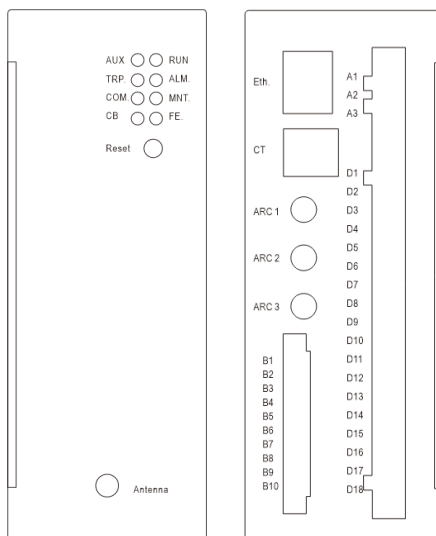


Introduction

AFR-3S Arc flash protection relays serve as crucial components for detecting arc faults in electrical systems, ensuring the protection of equipment and personnel. AFR-3 adopts advanced monitoring of parameters such as current, voltage, and electric power to swiftly identify arcs.

Designed for application in medium and high-voltage power distribution systems, control cabinets, transformers, generators, motors, and various electrical equipment, the AFR-3 Arc flash relay operates based on a dual-criteria principle. Combining arc light detection with overcurrent detection, it delivers rapid protection responses and high reliability.

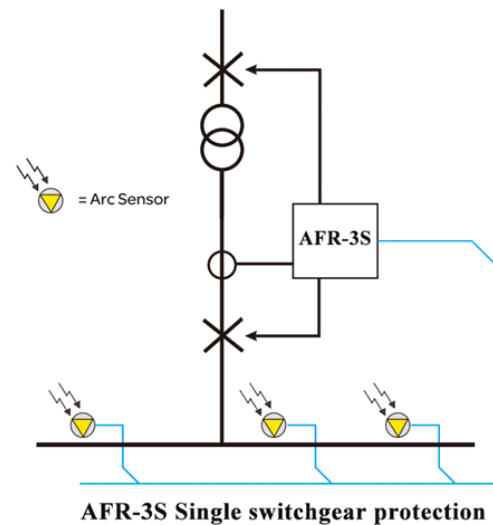
Terminal Definition



Main Features

- Advanced electrical power parameter monitoring.
- Support standard 35mm rail installation.
- Fast response, Identify arc faults in electrical systems.
- Effectively reduce the risk of fire in electrical systems.
- Quickly cut off the power supply to protect electrical safety.
- Adopt the dual criterion of arc detection and overcurrent detection.
- Comprehensive SOE record for analysis and system optimization.

Wiring Method



AFR-4 ARC FLASH PROTECTION RELAY

BUSBAR PROTECTION RELAY



Introduction

AFR-4 is a versatile and independently operating device for bay based protection. It supports 4-channels arc signal detection and can configuration multiple arc tripping modes, ensuring accurate and fast fault isolation. With a fast relay output speed up to 5ms, AFR-4 can minimize or completely eliminate arc flash damage, improving system safety and reliability. It can be used in various arc protection applications in low or medium voltage power distribution system.

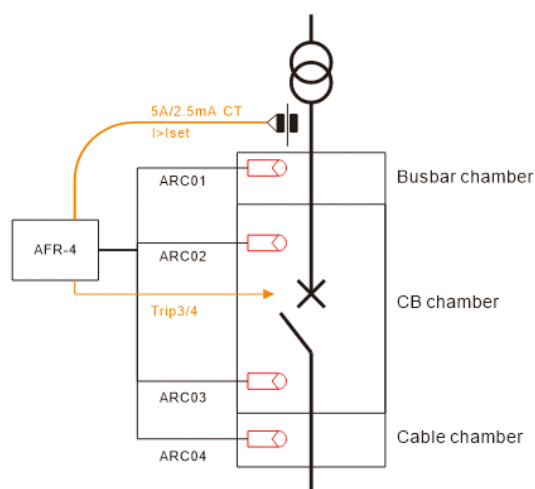
AFR-4 also provides flash warning and dual criteria tripping mechanism (arc detection + current), providing a comprehensive solution for arc flash protection. Integrated RS485/Modbus communication enables seamless remote monitoring and control, which is ideal for modern power systems.

Main Features

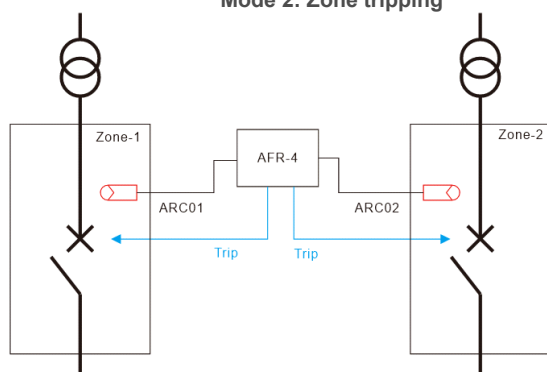
- $\leq 5\text{ms}$ fast relay tripping;
- Regional arc light detection
- Multiple combined tripping modes;
- Circuit breaker failure protection;
- 4 channels of arc light signals detection;
- Support 35mm DIN rail or panel mounting
- Dual criteria for arc detection and overcurrent detection;
- Integrated /RS485 MODBUS communication protocol;
- Support ST visible light and ST ultraviolet sensor access.

Typical Wiring

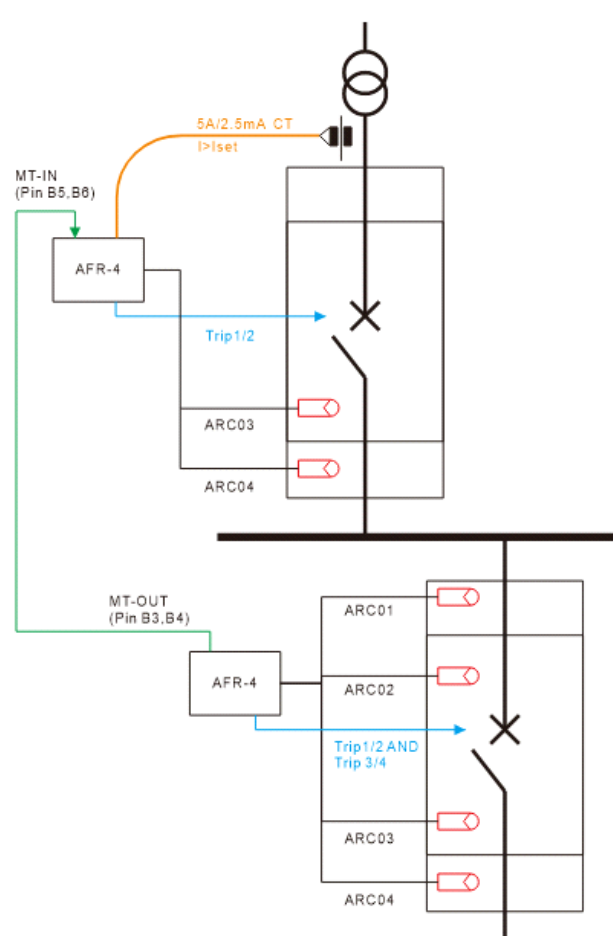
Mode 1: local tripping



Mode 2: Zone tripping



MT Mode: Master station tripping



Technical Characteristics

	AFR-M	AFR-3S	AFR-4
Basic parameter			
Power supply	85~265Vac/dc	85~265Vac/dc optional 24/48Vdc	
Consumption	Monitoring <8W; DO triggered <10W		
Protection range	0~20 In	0.06~10 In	
Rated current (In)	5A or 1A		
Burden	<0.5VA		
Protect current accuracy	<4%		
Protect frequency accuracy	0.1Hz		
Arc signal input & control			
Channels number	12-48	3	4
Sensor type	Optical fiber		
Detection light type	Visible light/UV light (optional)		
I/O capacity			
Digital input	16* DI, 5A@250Vdc, wet contact,optional dry contact	5*DI, 5A@250Vdc, NO; dry contact	
Digital output	8A@250Vac, dry contact	10A@250Vac/ 12A@24Vdc, dry contact Max. switching current: 10 A(dc)/ 12A(ac) Max. switching voltage: 277Vac/ 300Vdc.	
Trip action time	Pure arc protection: ≤10ms Overcurrent + arc protection: ≤20ms		
DO relay channels	9	4/6 (optional)	7
Safety isolation	Photoelectric isolation, isolation voltage 2500V		
RS485 Communication			
Comm port	RS485 Modbus-RTU (one standard, two optional)		
Isolation type	Photoelectric isolation, lightning protection		
Baud rate	9600bps		
Ethernet communication			
Interface	2-Way Ethernet optional		
Network parameters	10M/100M adaptive		
Default IP	192.168.12.2/192.168.13.2		
Others			
Working environment	-10 ~ 55°C, < 93% RH (Non-condensing)		
Storage environment	-30 ~ 70°C, < 70% RH (Non-condensing)		
Relative humidity	5%~95%		
Atmospheric pressure	60kPa~106kPa		



SCM-OPUV (UV light detection)

- Detection angle: 0-240°
- Photosensitive threshold: 1-10mw/cm²
- Default trigger threshold: 5mw/ cm²



SCM-OPVL1 (Visible light detection)

- Detection angle: 0-240°
- Max.transmission distance: <30 m
- Photosensitive threshold: 5-20KLUX.



SCM-OPVL2 (Visible light detection)

- Detection angle: 0-360°
- Photosensitive threshold: 5-20KLUX
- Trigger threshold: 8KLUX

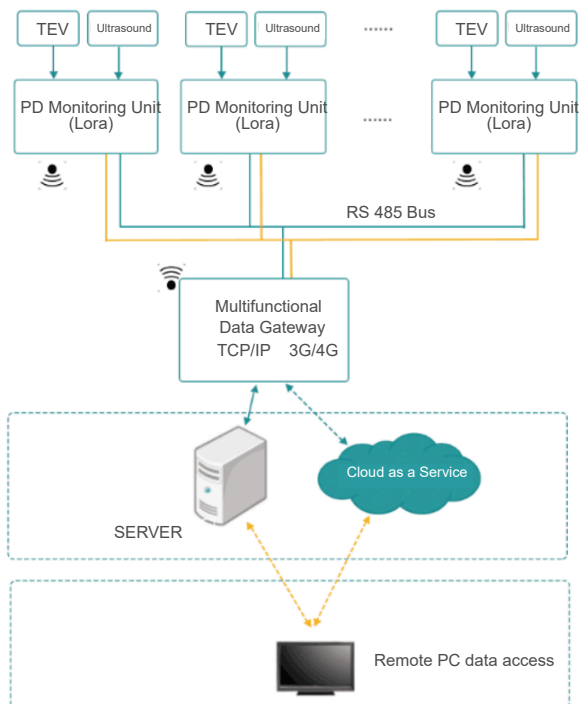
SCM-PD3000 PARTIAL DISCHARGE MONITOR

Introduction

Partial discharge is a kind of pulse discharge, which will produce a series of physical phenomena and chemical changes such as light, sound, electrical and mechanical vibration in the interior and surrounding space of power equipment. When insulation defects appear inside high-voltage electrical equipment, it will be accompanied by the generation of partial discharge signals.

SCM-PD3000 partial discharge monitor can be used with UHF sensor, TEV sensor, Ultrasonic sensor and online detection of partial discharge of high voltage equipment such as transformers, high voltage switchgear, GIS, and cable joints. Easy to carry, fast measurement, strong anti-interference ability, easy to use on site.

Working Principle



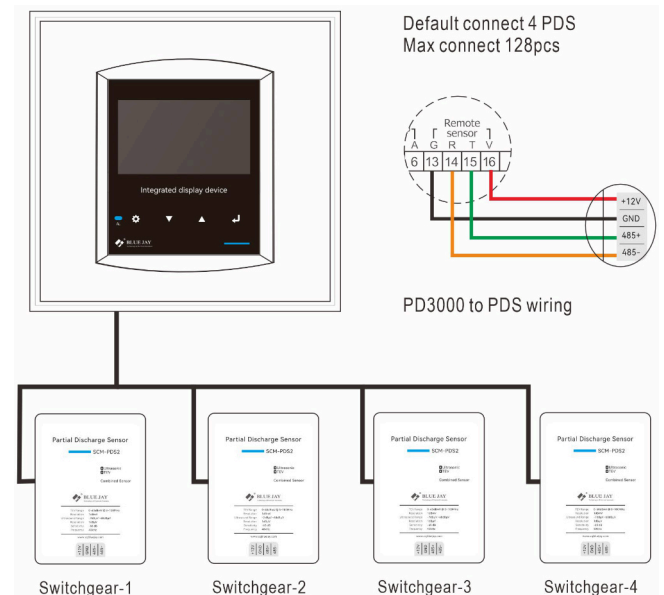
BUSBAR PROTECTION RELAY



Main Features

- Wall-mounted installation.
- Alarm multi-level threshold setting.
- Waveform data recording function.
- RS 485, Modbus-RTU, SCADA systems.
- Sensor detects TEV and audible ultrasonic.
- Automatic PD data acquisition and analysis.
- 2*DO NC & NO contact for external alarm trig.
- Anti-interference performance and high measurement accuracy.
- Joint detection of partial discharge signals by transient earth waves.
- HMI supports max 96pcs sensor, optional wireless, and wired(RS485) connection.

Wiring Method



Technical Characteristics

HMI electrical specification	
Auxiliary power	85-265Vac/dc, 20-60Vdc Optional
Power consumption	<6W
Communication	RS-485, MODBUS-RTU
Digital output	2* NC & NO, passive node
Environment temperature	-10 ~ +60°C
Environment humidity	RH 20% ~ 95% (No condensation)
Dimensions (L × W × H)	96*96*85mm or 144*144*100mm
Open install hole	91*91mm or 138*138mm
Remote sensor	
Power supply	12Vdc or 2000mAh build in battery*
Wireless band	433MHz~2.4GHz optional
Signal transmission distance	Up to 80m (260 feet)
Static power consumption	<10mW
Installation method	4* strong magnet, wall mount
TEV sensor	
Detect range	0~60 dBmV
HF frequency response	3~100MHz
Resolution / Accuracy	1dBmV / ±1dBmV
Ultrasonic sensor	
Detect range	-7dBμV~68dBμV
Resolution / Accuracy	1dB / ±1dB
Sensitivity	-65 dB (0 dB=1 volt/μbar rms SPL)
Sensor center frequency	40 KHz

SCM-W3000 SWITCHGEAR THERMAL MONITOR

BUSBAR PROTECTION RELAY



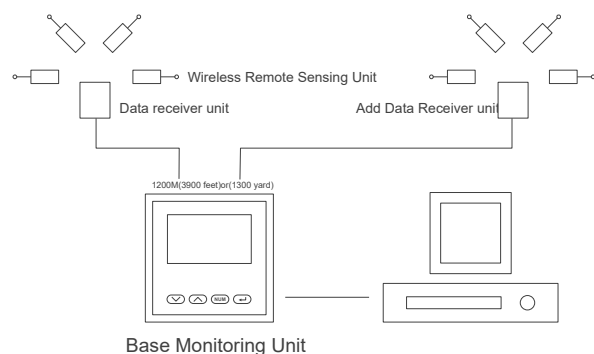
Introduction

SCM-W3000 switchgear thermal monitor designed can enhance safety by enabling operators and maintenance engineers to proactively manage temperature variations in switchgear components, minimizing the risk of sudden temperature increases.

SCM-W3000 provides continuous 24/7 monitoring for critical busbar joints with support for up to 32 monitoring nodes per switchgear. featuring panel mount HMI units with acousto-optic alarms and DO ports, users can integrate it into automatic alarm/control systems. Additionally, the equipped RS485 port allows seamless connection to existing SCADA systems for remote sensing control.



Working Principle



Main Features

- Alarm output (indication through a lighting led).
- Pre-defined high or low temperature conditions.
- Low-size (144 x 144 mm), panel-mounting base unit.
- RS-485 or Ethernet communication to PC (optional).
- Instantaneous, maximum and minimum values of each measured parameter.
- Real-time data 24*7 / 365 Days monitor LV switchgear incomers and feeder, line, and load side.
- Two-level alarm parameter setting. provide 2*DO NC & NO contact for external alarm trig.
- Battery-free design, permanently installed sensors and zero maintenance.

Related Accessories

SCM-SAW-S Remote wireless node



- 0-65°C, accuracy 0.5°C
- Maintenance free during life cycle
- Suitable for flat surfaces or VCB contacts

SCM-SAW-W Remote wireless node



- Surface acoustic wave (SAW)
- Maintenance free during life cycle
- External wiring probe for irregular surface

SCM-BAT-S Remote wireless node



- Battery powered, 2000mAh for 2~4 years
- Green/Yellow/Red for three phase
- Suitable for flat surfaces or VCB contacts (test under 2min data transmit interval)

Technical Characteristics

Electrical characteristics	
Power supply	AC / DC 80-270V, 45-65Hz ,DC 20-60V (optional)
Maximum power consumption	6W
Wireless remote sensing unit	Standard type 3-12
Temperature monitor range	From 0°C ~ 99 °C
Wireless communication frequency	433Mhz / 460Mhz / 869Mhz
Transmit power	Less than 20mw
Distance of the receiver and monitor	Up to 80m (260 foot)
Others	
Battery life	3-5 years (every fifteen minutes to send a data)
Working environment	Temperature: -20°C~+125°C Humidity: RH 20%~95% (No condensation)
Storage conditions	Temperature: -25°C~+60°C Humidity: RH 20%~95%
Protection	Panel: IP40
Dimensions	Base monitoring unit: 144mm×144mm×110mm Data receiver unit: 65mm×50mm×30mm Wireless remote sensing unit: 65mm×50mm×25mm

DC INSULATION MONITORING DEVICES

DC INSULATION MONITORING



Introduction

DC insulation monitoring devices are specially designed to monitor the insulation status in DC electrical systems. By measuring the insulation resistance in the electrical system, this device can provide high-precision, real-time monitoring and feedback to ensure that the insulation of the electrical system is in a safe state.

The DC insulation monitoring system can quickly detect many DC leakage conditions, including DC ground faults, insulation degradation, AC signal intrusion, and DC signal mutual intrusion. Usually used in DC power supply systems, such as solar power stations, DC transmission system, electric vehicle charging stations.



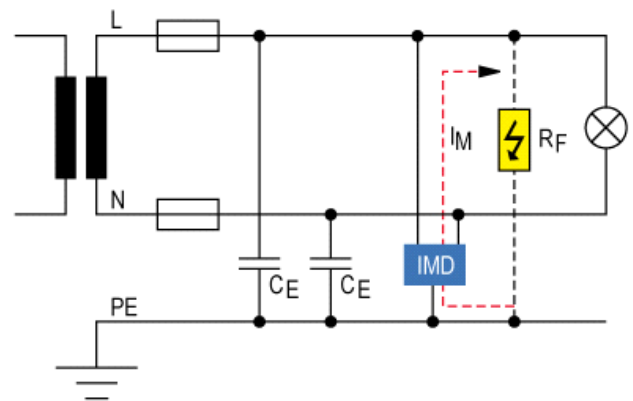
Main Features

- Automatic alarm system.
- Multiple fault type detection.
- High voltage withstand ability.
- Easy installation and maintenance.
- Real time monitor insulation status.
- RS485 remote monitoring and control.
- Widely used in DC power supply systems.
- High-precision measurement resistance changes.

Application

- Solar power station.
- DC transmission system.
- Railway electrical system.
- New energy storage system.
- Power electronic equipment.
- Electric vehicle charging station.

Working Principle



Ordering Information

Series name	Main feature	Special notes
ZJS-102	<ul style="list-style-type: none"> DC voltage range:0-300V Insulation resistance detection: 0-300 KΩ RS485/ Ethernet communication interface W*H*D: 350*180*130mm,Panel mounting 	Balanced bridge principle Specially used for DC panel
ZJJ Series	<ul style="list-style-type: none"> DC voltage range:0-300V Insulation resistance detection: 0-199.9 KΩ W*H*D: 72*100*67mm,Panel mounting 	Adopt pure analog circuit signals
	<ul style="list-style-type: none"> DC voltage range:0-1000V Insulation resistance detection: 0-1999 KΩ W*H*D: 115*105*40mm,35mm Din-rail mounting 	
JY1000-ST	<ul style="list-style-type: none"> DC voltage range:100-1000V Insulation resistance detection: 1KΩ~10 MΩ RS485, Modbus RTU W*H*D: 122.5* 75*40mm,35mm Din-rail mounting 	Self-test function optional
JY1000 JY1000-AL	<ul style="list-style-type: none"> DC voltage range:100-1000V Insulation resistance detection: 1KΩ~10 MΩ RS485, Modbus RTU W*H*D: 98*49*52mm,35mm Din-rail mounting 	Fault alarm function optional
JY1000-C2	<ul style="list-style-type: none"> DC voltage range:100-1000V Dual-channels insulation monitoring Insulation resistance detection: 1KΩ~10 MΩ W*H*D: 145*95*40mm,35mm Din-rail mounting 	RS485/Modbus-RTU protocol
JY2000-AL	<ul style="list-style-type: none"> DC voltage range:100-2000V Insulation resistance detection: 1KΩ~10 MΩ W*H*D: 145*115*40mm,35mm Din-rail mounting Fault alarm function RS485, Modbus-RTU 	Widely insulation monitoring range

ZJS-102 DC INSULATION MONITOR

DC INSULATION MONITORING



Introduction

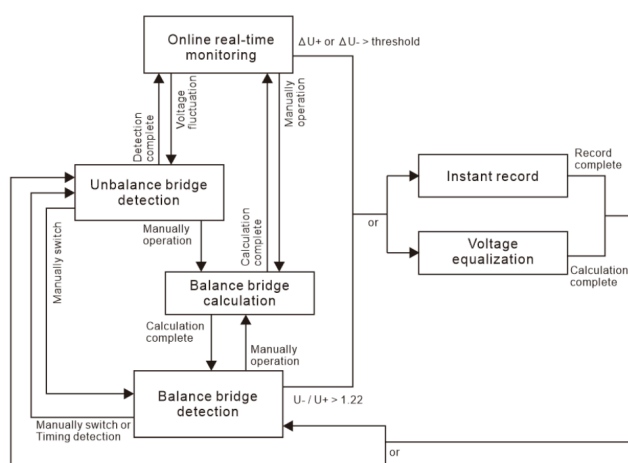
ZJS-102 DC system insulation monitor is a professional online monitoring equipment that uses balanced and unbalanced bridge detection technology to effectively eliminate the interference of distributed capacitance in the system. ZJS-102 can display the leakage current of each circuit in real time and has complete DC insulation fault monitoring functions, including single-point grounding, multi-point grounding, busbar two-pole grounding, etc.

ZJS-102 use transient alarm waveform capture and current synchronous detection technology, the insulation monitoring system records voltage and current fault curves, realizes instantaneous ground monitoring and ground fault location functions, and is an ideal choice for DC power system safety protection.

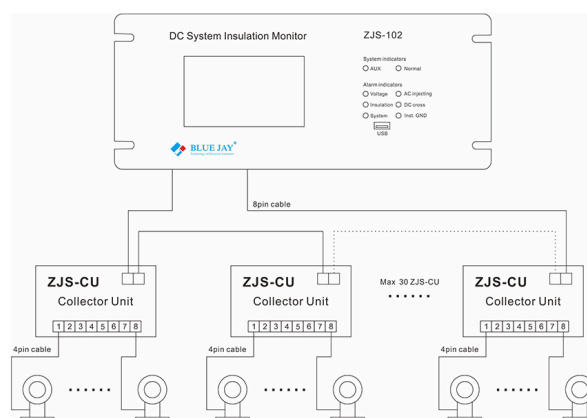
Main Features

- Circuit insulation classification alarm.
- Instantaneous ground event recording.
- Historical data analysis and download.
- Max support monitoring 240 branches.
- RS485 remote management and control.
- System distributed capacitance detection
- Continuous insulation monitoring and alarm.
- Real-time monitoring and alarming of AC /DC voltage.
- High-precision 16-bit AD converter, PLC integrated digital output.

Working Principle



Wiring Method



Technical Characteristics

Monitoring range of system insulation resistance to ground	
Earthing alarm	0-199.9K
Pre-warning	100-999.9K
Monitoring and detect range of branch insulation resistance to ground	
0-300K	
Working voltage range	
Positive pole to ground	0-300V
Negative pole to ground	0-300V
System voltage	0-300V
AC injection voltage	0-280V
Busbar-II system voltage (DC cross detect)	0-300V
Battery bank insulation fault location error	±1 cell
Alarm history record	
Record list quantities	2000 lists
Each record alarm list volume	≤32 branches
Real-time leakage current measurement	
Screen display resolution	0.01mA
Current sensor range	10mA, 20mA, 50mA, 100mA optional
Each ZJS-102 port detect current volume	≤ 240 branches
Each ZJS-CU collector unit connected current sensor	≤8
Instant event record	
Capture sampling ratio	1KHz, 500Hz, 250Hz, 125Hz configurable
Record quantities	2000
Waveforms for each instantaneous event	8
Others	
Passive digital output	7
Fault alarm indicator	6
Distributed capacitance range of the system	0-200uF

ZJJ SERIES DC INSULATION MONITOR

DC INSULATION MONITORING

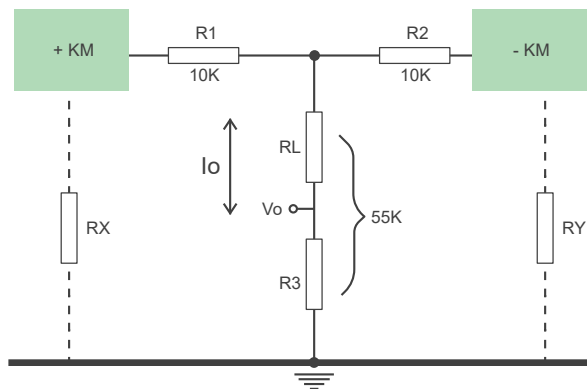


Introduction

ZJJ series DC insulation monitoring relay is an advanced device specially designed for monitoring the insulation condition of DC busbar. Using a fully calculated hardware voltage dividing circuit, it can directly display the ground resistance value, solving the problem of old-fashioned relays that only display the ground current or have no display. A highly sensitive ground resistance monitoring and display circuit can quantitatively evaluate the insulation degree of the DC system, which is crucial to ensuring the safe operation of the system.

The ZJJ series DC ground fault detector monitors the insulation condition of the DC busbar and the grounding resistance of the positive and negative buses online in real time. It adopts a fully static circuit, including a highly sensitive ground resistance monitoring and display circuit. When the insulation monitor is lower than the set value, a warning signal is issued. ZJJ-4SA adopts panel installation, while ZJJ-4SC adopts Din-rail installation.

Working Principle

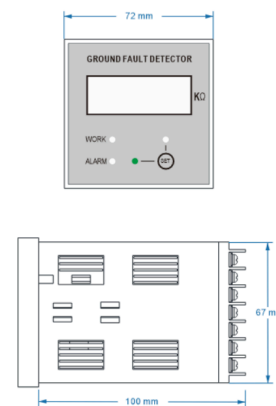


Main Features

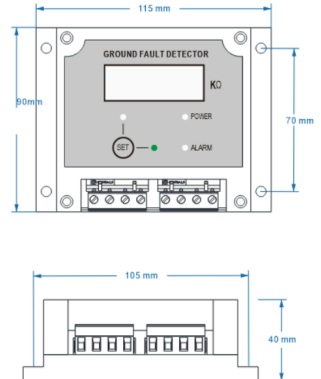
- Bridge balance method for resistance measurement.
- Smaller short-circuit grounding current for safe operation.
- Alarm resistance threshold online display and direct setting.
- Terminals are pluggable for easy maintenance and replacement.
- Monitoring the DC circuit bus bar's RF to earth insulation resistance.
- Direct LCD busbar grounding resistance values, positive and negative.
- Reinforced shell, modular structure, high reliability.
- Wide monitoring voltage, 48-1000V, working voltage 24-220V can be customized, adjustable response value ranges of 0-100kΩ.

Dimension

ZJJ-4SA: Panel Mounting



ZJJ-4SC: Din-rail Mounting



Technical Characteristics

Basic parameters	ZJJ-4SA	ZJJ-4SC
Input voltage	0-300VDC	0-1000VDC
Power supply voltage	Self-powered	85-265 VAC/DC
Power supply current	7-20mA	
Measuring resistance	0~199.9KΩ	0~1999KΩ
Relay capacity	10A@250VAC / 30VDC	2A@250VAC
Measurement accuracy	V=220V (5%)	V=1000V (5%)
Alarm setting range	0~100KΩ	0~990KΩ
Short circuit ground current	V=220V (2mA)	
Action return factor	Rs=50KΩ(95%-98%)	
Output contact capacity	Sensitive load=5mS(DC220V0.2A) Resistive load(DC220V 2A)	
Installation type	Panel mount	Din-rail mount
Operating temperature	-40°C ~ 70°C, RH 85%	

JY1000-ST INSULATION MONITORING RELAY

DC INSULATION MONITORING



Introduction

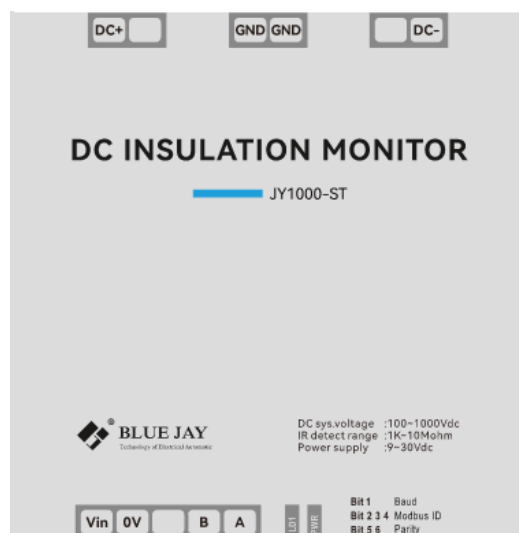
JY1000-ST is a DC insulation monitoring device based on MODBUS protocol, including DC to ground insulation impedance monitoring, DC voltage monitoring, DC voltage reverse connection alarm and other safety monitoring functions. It can be used for electric vehicle DC charging system, photovoltaic system, energy storage system, DC grid and other DC systems below 1000V.

JY1000-ST has the function of starting and stopping insulation monitoring. After insulation monitoring is started, the insulation resistance of positive and negative poles to ground can be monitored in real time. The monitoring result is not affected by DC voltage fluctuation, and is not affected by the symmetry of insulation resistance of positive and negative poles.

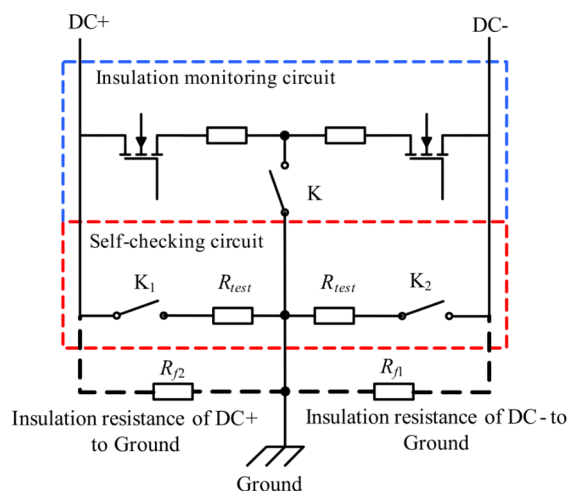
Main Features

- Rail mounting or screw fixing.
- Voltage reverse polarity alarm.
- High voltage grounding switch.
- Convenient parameter setting.
- Adaptive capacitance to ground.
- Monitor positive and negative poles.
- Insulation monitoring equipment self-test.
- RS485 remote monitoring and management.
- Widely insulation monitoring range (100V~1000VDC).

Terminal Definition



JY1000-ST Working Principle)



Technical Characteristics

Basic parameters			
Power supply	10-30VDC, power 3W		
DC voltage range	100V~1000V		
DC voltage measurement accuracy	$\leq 2V + 0.3\%$		
Insulation resistance measurement range	1K Ω ~10M Ω (DC System voltage:100V~1000V)		
Insulation monitoring accuracy (When :DC voltage:100V-1000V)	CY range	Resistance range	Accuracy
	0~0.8 μ F	$\leq 60K\Omega$	$\leq 3K\Omega$
		60k Ω <R \leq 1M Ω	$\leq 5\%$
	0.8 μ F ~3 μ F	$\leq 60K\Omega$	$\leq 6K\Omega$
		60k Ω <R \leq 1M Ω	$\leq 20\%$
Off-line pressure test	<2mA		
Maximum relay switching voltage	250VAC/30VDC		
Maximum relay switching current	3A		
Relay contact resistance	<100m Ω		
Relay insulation resistance	100M Ω		
Communication	RS485,modbus RTU		
Dimension	98*49*52mm,Din-rail:35mm		
Standard	IEC 61851-23 (2014-03):2014-11		
Humidity	85%		
Storage environment	- 40°C ~125°C		
Operating environment	- 40°C ~75°C		

Other parameters		
Pressure point	Maximum voltage rating	Time
DC+/DC- to GND	4200VDC/3000VAC	≤ 1 min
Power supply +/- to GND	3500VDC/2500VAC	≤ 1 min
RS485 A/B to GND	3500VDC/2500VAC	≤ 1 min
DC+/DC- to power supply +/-	3500VDC/2000VAC	≤ 1 min
DC+/DC- to A/B	3500VDC/2000VAC	≤ 1 min

JY1000 INSULATION MONITORING RELAY

DC INSULATION MONITORING



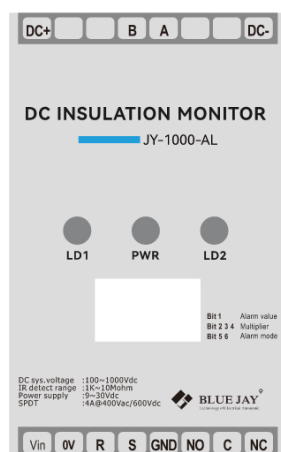
Introduction

JY1000 is an efficient insulation monitoring device specially designed for car charging piles. It can monitor the insulation status of the DC power supply system of charging piles in real time, detect potential insulation faults in time and alarm, effectively preventing fires and safety accidents. Users can realize start-stop and data collection of insulation monitoring through RS485 communication.

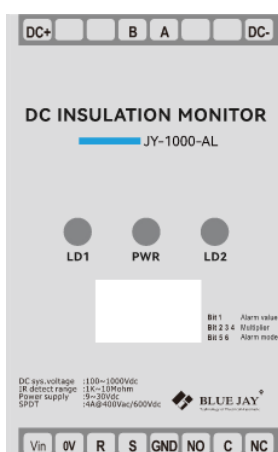
JY1000-AL is a DC-to-ground insulation monitoring module based on the unbalanced bridge principle, integrating monitoring and protection functions. It can monitor the insulation resistance value of the positive and negative poles of the DC floating system to the ground, ranging from 1KΩ to 10MΩ, and detect the DC voltage value, ranging from 100V to 1000V. In addition, JY1000-AL is equipped with a high-voltage grounding switch to realize online on-off function to ensure complete isolation from the ground when the module is powered off, reset or stops working.

JY1000	Standard model
JY1000-AL	With Fault alarm function

Terminal Definition



JY1000

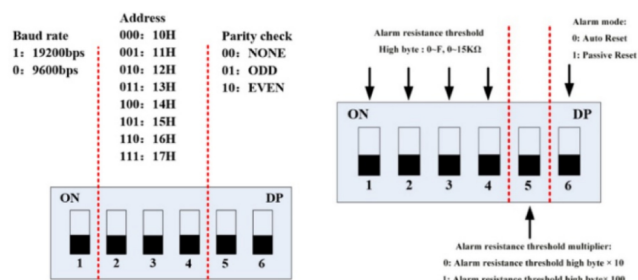


JY1000-AL

Main Features

- Adaptive capacitance to ground.
- Simple device setting by DIP switch.
- Faster monitoring speed of turning on.
- Communicate with RS485 modbus.
- Equipped with high voltage grounding switch.
- Wider DC insulation monitoring range DC 100~1000V.
- Unbalanced bridge principle for resistance measurement.
- Monitoring the DC circuit bus bar insulation resistance RF to earth.

DIP Switch Settings



JY1000

JY1000-AL

Technical Characteristics

Basic parameters			
Power supply	10-30VDC, power 3W		
DC voltage range	100V~1000V		
DC voltage measurement accuracy	$\leq 2V + 0.3\%$		
Insulation resistance measurement range	1K Ω ~10M Ω (DC System voltage:100V~1000V)		
Insulation monitoring accuracy (When :DC voltage:100V-1000V)	CY range	Resistance range	Accuracy
	0~0.8 μ F	$\leq 60K\Omega$	$\leq 3K\Omega$
		60k Ω <R \leq 1M Ω	$\leq 5\%$
	0.8 μ F ~3 μ F	$\leq 60K\Omega$	$\leq 6K\Omega$
		60k Ω <R \leq 1M Ω	$\leq 20\%$
Off-line pressure test	<2mA		
Maximum relay switching voltage	250VAC/30VDC		
Maximum relay switching current	3A		
Relay contact resistance	<100m Ω		
Relay insulation resistance	100M Ω		
Communication	RS485,modbus RTU		
Dimension	98*49*52mm,Din-rail:35mm		
Standard	IEC 61851-23 (2014-03):2014-11		
Humidity	85%		
Storage environment	- 40°C ~125°C		
Operating environment	- 40°C ~75°C		

Other parameters		
Pressure point	Maximum voltage rating	Time
DC+/DC- to GND	4200VDC/3000VAC	≤ 1 min
Power supply +/- to GND	3500VDC/2500VAC	≤ 1 min
RS485 A/B to GND	3500VDC/2500VAC	≤ 1 min
DC+/DC- to power supply +/-	3500VDC/2000VAC	≤ 1 min
DC+/DC- to A/B	3500VDC/2000VAC	≤ 1 min

JY1000-C2 INSULATION MONITORING RELAY

DC INSULATION MONITORING



Introduction

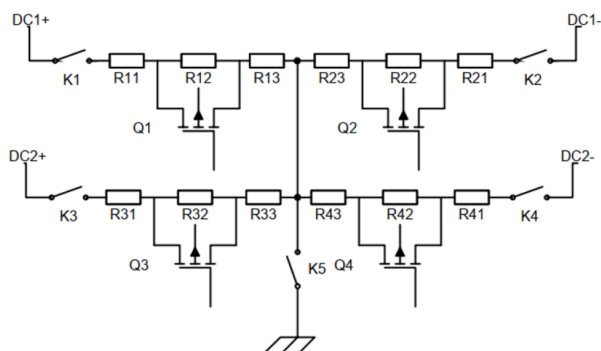
JY1000-C2 is used in on-line monitoring insulation resistance of the DC floating system (Dual DC system shared one ground). Dual DC channels are controlled independently, two DC insulation monitoring non-interference in each other. Users can enable or disable the insulation monitoring function of each DC channel and acquire insulation resistance values by RS485 communication.

JY1000-C2 adopts Dual-DC channels independent control scheme. Users can control dual-channel startup, close and data reading respectively according to the communication protocol.

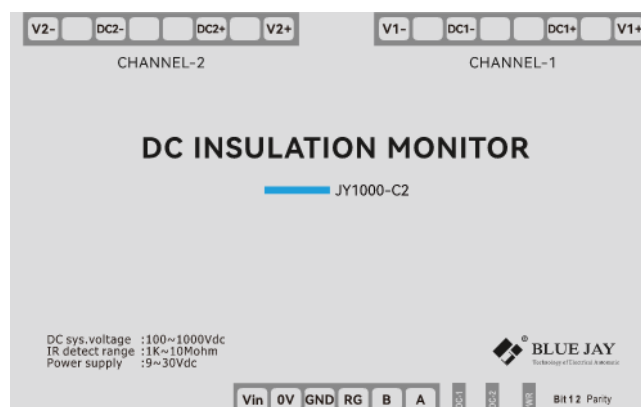
Main Features

- Dual-channels independent control.
- Remote monitoring and management.
- Monitor positive and negative poles.
- Ground insulation resistance.
- DC voltage monitoring.
- Vehicle side DC voltage monitoring.
- Voltage reverse polarity alarm.

Working Principle



Terminal Definition



Technical Characteristics

Basic parameters			
Power supply	10-30VDC, Power 6W		
DC voltage range	100V~1000V		
DC voltage measurement accuracy	$\leq 2V + 0.3\%$		
Insulation resistance measurement range	1K Ω ~10M Ω (DC System voltage:100V~1000V)		
Insulation monitoring accuracy (When :DC voltage:100V-1000V)	CY range	Resistance range	Accuracy
	0~0.8 μ F	$\leq 60K\Omega$	$\leq 3K\Omega$
		60K Ω <R \leq 1M Ω	$\leq 5\%$
	0.8 μ F ~3 μ F	$\leq 60K\Omega$	$\leq 6K\Omega$
		60K Ω <R \leq 1M Ω	$\leq 20\%$
Off-line pressure test	<2mA		
Communication	RS485,Modbus RTU/ Private protocol		
Dimension	145*95*40mm,Din-rail:35mm		
Standard	IEC 61851-23 (2014-03):2014-11		
Humidity	85%		
Storage environment	- 40°C ~125°C		
Operating environment	- 40°C ~75°C		

Other parameters		
Pressure point	Maximum voltage rating	Time
DC+/DC- to GND	4200VDC/3000VAC	$\leq 1\text{min}$
Power supply +/- to GND	4200VDC/3000VAC	$\leq 1\text{min}$
RS485 A/B to GND	4200VDC/3000VAC	$\leq 1\text{min}$
DC+/DC- to power supply +/-	4200VDC/3000VAC	$\leq 1\text{min}$
DC+/DC- to A/B	4200VDC/3000VAC	$\leq 1\text{min}$

JY2000-AL INSULATION MONITORING RELAY

DC INSULATION MONITORING



Introduction

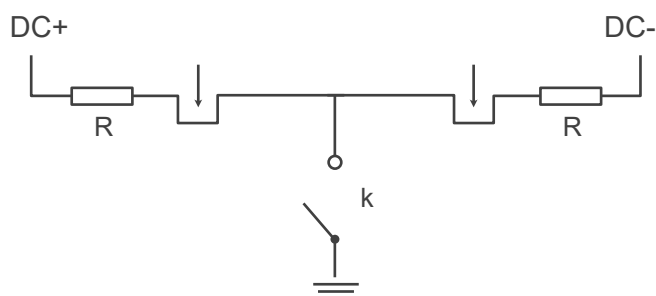
JY2000-AL is a DC to ground insulation monitoring module based on the principle of unbalanced bridge, which has monitoring and protection functions in one. It can monitor the insulation resistance value of the positive and negative poles of the DC floating system to the ground, ranging from 1KΩ to 10MΩ; at the same time, it can also detect the DC voltage value, ranging from 100V to 2000V.

After the insulation monitoring function is turned on, the product can continue to monitor the insulation resistance in real time, and user can read the insulation resistance value as soon as 1 second after the insulation monitoring function is turned on. For the DC to ground capacitance, module can realize self-adaptive monitoring the ground capacitance below 3μF (the positive and negative poles to the ground capacitance are respectively below 3μF, and the total capacitance is below 6μF).

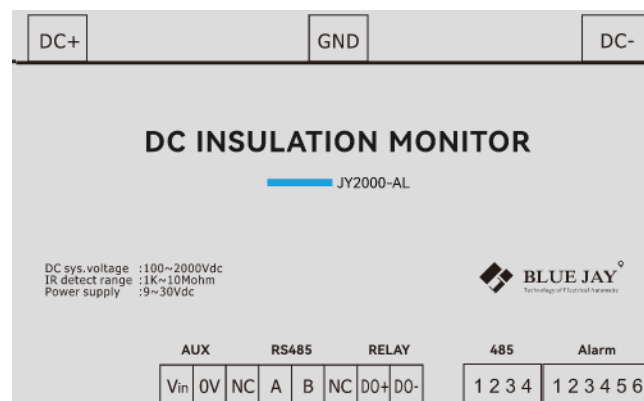
Main Features

- High voltage grounding switch.
- Widely power supply range.
- Widely insulation monitoring range (100V~2000VDC).
- Insulation monitoring equipment self-test.
- Adaptive capacitance to ground.
- Convenient parameter setting.
- Remote monitoring and management.
- Monitor positive and negative poles.
- Ground insulation resistance.
- Voltage reverse polarity alarm.

Working Principle



Terminal Definition



Technical Characteristics

Basic parameters		
Power supply	10-30VDC, Power 3W	
DC voltage range	100V~2000V	
DC voltage measurement accuracy	$\leq 2V + 0.3\%$	
Insulation resistance measurement range	1K Ω ~10M Ω (DC System voltage: 100V~1000V)	
Insulation monitoring accuracy	DC voltage: 100V-300V	$\leq 3K\Omega + 10\%$
	DC voltage: 300V-2000V	$\leq 3K\Omega + 5\%$
	CY>0.3 μ F, insulation resistance>1M Ω or CY>1 μ F	>10%
Off-line pressure test	<2mA	
Maximum relay switching voltage	250VAC/30VDC	
Maximum relay switching current	3A	
Relay contact resistance	<100m Ω	
Relay insulation resistance	100M Ω	
Communication	RS485, Modbus RTU	
Standard	IEC 61851-23 (2014-03):2014-11	
Dimension	145*115*40, Din-rail: 35mm	
Humidity	85%	
Storage environment	- 40°C ~125°C	
Operating environment	- 40°C ~75°C	

Other parameters		
Pressure point	Maximum voltage rating	Time
DC+/DC- to GND	4200VDC/3000VAC	$\leq 1\text{min}$
Power supply +/- to GND	3500VDC/2500VAC	$\leq 1\text{min}$
RS485 A/B to GND	3500VDC/2500VAC	$\leq 1\text{min}$
DC+/DC- to power supply +/-	3500VDC/2500VAC	$\leq 1\text{min}$
DC+/DC- to A/B	3500VDC/2500VAC	$\leq 1\text{min}$

CHONG QING BLUE JAY TECHNOLOGY CO.,LTD

www.cqbluejay.com



Tel:
+86-023-67628702

Mail:
sales@cqbluejay.com

Add:
1802, BUILDING 2, NO. 88, JIANXIN EAST ROAD,
CHONGQING, 400020, CHINA

